



Newaygo County Recreation Plan

2023 - 2027





The West Michigan Shoreline Regional Development Commission is a federal and state designated regional planning and development agency serving 120 local governments in Lake, Mason, Muskegon, Newaygo, and Oceana counties.

The Commission's mission is to "promote and foster regional development in West Michigan through cooperation amongst local governments and regional partners." The general regional goal of the West Michigan Shoreline Regional Development Commission is to provide assistance to member local governments in addressing regional and public policy issues, especially as they pertain to planning and development.

Bonnie McGlothin, Chairperson
Jennifer Hodges, Vice-Chairperson
James Maike, Secretary

Erin Kuhn, Executive Director

Project Staff:

Stephen Carlson, Program Manager
Robert Johnson, Planning Aide

Newaygo County Board of Commissioners

Bryan Kolk, Chairperson
James Maike, Vice Chairperson
Paul Mellema
Chuck Trapp
Ken DeLaat
Brenda Bird
Mike Kruthoff

Newaygo County Parks and Recreation Commission

Doug Harmon, Chair
Mark Guzniczak, Vice Chair
Steve Hatting, Secretary
Mark Pitzer, Exec Committee
Charles Chandler
John Clark
James Maike
Stan Stroven
Chuck Trapp
Dale Twing

Parks Director: Nick Smith

Table of Contents

Introduction.....	1
Community Description.....	3
Administrative Structure	7
Roles of the Newaygo County Board and Parks & Recreation Commission	7
General Summary of Parks and Recreation Director Responsibilities.....	7
Newaygo County Parks & Recreation Commission Organizational Chart.....	8
Annual and Projected Budget.....	8
Sources of Funding.....	8
Recreation Programming.....	9
Role of Volunteers.....	9
Relationship(s) with Other Public or Private Organizations.	10
Recreation & Resources Inventory	11
Methods Used to Conduct the Inventory	11
County Parks Map	11
Community Owned Parks and Recreation Facilities	12
Accessibility Assessment.....	20
Grant-Assisted Parks and Recreation Facilities.....	33
Description of the Planning & Public Input Process.....	34
Goals and Objectives	35
Action Program.....	37
Conclusion	38
Online Survey Summary Report.....	39
Plan Adoption Documentation	44

INTRODUCTION

This document, the Newaygo County Recreation Plan, is intended to guide present and future recreational resource development within the county, including parkland, parks facilities, recreational programs, and public open space.

This plan, in addition to serving as a guide for recreation facility and program development, is prepared to satisfy the requirements set forth by the Michigan Department of Natural Resources (MDNR). Recreation plans are required by the MDNR for state and federal grant eligibility.

Overview of the Planning Process

In 2022, Newaygo County contracted with the West Michigan Shoreline Regional Development Commission for the purpose of updating the county's Community Recreation Plan. Every effort has been made to present information that is current and accurate. The Newaygo County Board and the West Michigan Shoreline Regional Development Commission shall not be held liable for any errors or omissions related to this Plan. This Plan is a general planning document. Therefore, a thorough investigation with original research materials should be undertaken before proceeding with any specific implementation decisions.

Citizen input is very important in addressing recreation-related issues facing county residents as a whole. The planning process is most effective when all sectors of the citizenry provide input into the future of their community. Opportunities for input were provided through a public meeting, an online survey, County Board meetings, Newaygo County Parks & Recreation Commission meetings, and a public hearing. Social media was used to notify the public and park visitors of the public input meetings; flyers were posted within Newaygo County park facilities; notice of the public hearing was published in the Times-Indicator, a general circulation newspaper in Newaygo County; emails were sent to all units of government within the county. The West Michigan Shoreline Regional Development Commission also provided a QR code and link to the online survey in its August/September newsletter.

Recreation Plan Milestones

Online Recreation Survey Period

- September 1, 2022 thru September 30, 2022

Public Input Meeting

- October 4, 2022 - regular Newaygo County Parks & Recreation Commission meeting

Goals & Objectives Review

- October 11, 2022 - special Parks & Recreation subcommittee meeting

Draft Plan Development

- October 11, 2022 thru October 31, 2022

Draft Plan Public Review Period

- November 1, 2022 thru November 30, 2022

Public Review Meeting

- December 6, 2022

Parks & Recreation Commission Adoption

- December 6, 2022

County Board of Commissioners Adoption

- January 2023

Function of the Plan

This particular plan is intended to serve as a guide for future decisions and actions related to recreation. It should be used by the decision-makers of Newaygo County based on the desire of the general public and the availability of resources.

The following are specific functions of this plan:

- To provide a means for county residents to participate in determining the future of their community, thereby promoting the interests of the community.
- To establish goals and objectives to be used as a guide for future decisions regarding public recreation and open space and not to be competing with private enterprise.
- To outline implementation strategies that can ensure that future development is consistent with the goals and objectives of the county.
- To provide a detailed inventory of recreation facilities and assist decision-makers with development decisions related to those facilities.
- To designate suitable areas for future recreation development while encouraging the preservation and conservation of natural resources.
- To provide means by which grant funding can be secured for recreation-related development projects.
- To prepare a plan that is consistent with Michigan Public Act 256 of 1917, as amended.

Legal Basis and Development

This Plan is enabled by Michigan law, but does not carry the power of statutory law or ordinance. Its principles are derived from Public Act 156 of 1917, an act authorizing counties to operate systems of public recreation and playgrounds which states, in part that:

Sec. 1 (2-4). Counties may acquire, equip, and maintain land, buildings, or other recreation facilities. Counties may employ a superintendent of recreation and assistants. Counties may vote and expend funds for the operation of such a system.

Sec 3 (1-4). Counties may operate a system of public recreation and playgrounds, independently, or cooperate with any other city, village, county, township or school district in its conduct in any manner in which they may mutually agree, or delegate the operation of this system to a Recreation Board created by any or all of them, and appropriate money, voted for this purpose, to such board.

COMMUNITY DESCRIPTION

Newaygo County is a mainly rural area located in the west central part of Michigan’s Lower Peninsula nearly halfway between the Michigan-Indiana border and Grand Traverse Bay. The county is bordered by Lake County to the north, Mecosta and Montcalm counties to the east, Kent County to the south, Muskegon County to the south and west, and Oceana County to the west. The county consists of four (4) cities and twenty-four (24) townships, one (1) village, and encompasses all or a portion of eleven (11) school districts.

Newaygo County is a large county with an area of 551,757 acres, or approximately 862 square miles. The City of White Cloud is the county seat located in the central portion of the county. The county’s estimated population in 2021 was 50,296 with a total of 24,735 housing units. The population has increased, while the estimated number of housing units has decreased slightly since the 2010 U.S. Census. Map #1 indicates the regional local of Newaygo County.

Table 1

Newaygo County Population

1970	1980	1990	2000	2010	2020	2021*
27,992	34,917	38,202	47,874	48,460	49,978	50,296

Source: U.S. Census Bureau

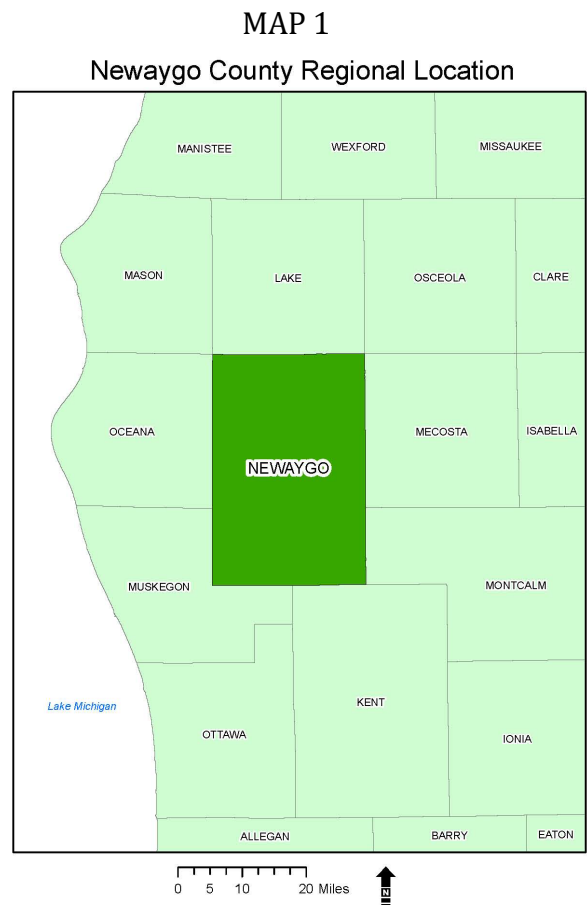
*estimate

Newaygo County History and Development

The following section is carried over directly from the previous editions of the Newaygo County Recreation Plan for the purpose of preserving a public record of the history of Newaygo County.

From 11,000 years ago until the arrival of the first Europeans in Michigan, various Indian tribes periodically occupied what is now Newaygo County. During the retreat of the last glacier, tundra and forests of spruce covered the landscape. Indians of the Paleo Period followed caribou into what is now Michigan. Projectile points (fluted, lanceolate points) that were used by the Indians have been found north of the Muskegon River in the County.

By 2000 B.C., the forests and rivers began to look like those of today. Between 2000 B.C. and about 500 B.C., Indians of the Archaic Period hunted deer in winter and fished in summer. By about 100 B.C., the Hopewell Indians lived in what is now called Newaygo County. The Hopewell culture probably extended as far



north as the Muskegon River in Newaygo County. Artifacts from this period have been found in numerous mounds on the river bluffs between Newaygo and Croton, where the Hopewell Indians buried artifacts with their dead.

The Mallon Mounds near Brooks Lake and other mounds date from the Woodland Period (700 to 1000 A.D.). Indians of this period were probably the progenitors of the Ottawa Indians, who made contact with the first Europeans. The Ottawas engaged mainly in specialized fur trapping. They exchanged furs for agricultural products grown to the south. They fished in summer and hunted in winter. Archaeological evidence at sites in Oceana County indicates that they hunted buffalo, beaver, and elk.

The first Europeans to navigate the Muskegon River were French trappers who traded with the Indians well before recorded history. The earliest permanent settlement was a trading post on the Muskegon River that dates to about 1834. Another trading post was established at Old Woman's Bend, 2 miles below the present City of Newaygo.

European settlement of Newaygo County began with lumbering. When the Indians gave up title to their land following the Treaty of 1836, speculators came to Newaygo County from Chicago. They established claims over the vast timber resources, established squatters rights at river mouths, and ran sawmills with water power.

A group of capitalists from Chicago journeyed up the Muskegon River, had floated logs down the river before, but the Penoyers were the first to raft them down the river to Lake Michigan and finally to Chicago. A member of this first group to come to the area, Jack McBride, built a cabin at the mouth of Penoyer Creek, thus becoming Newaygo's first permanent white settler.

The boundaries for Newaygo County were set in 1840, but being unorganized, it was attached to Kent County to the south. It became a separate county in 1851, being organized in 1852.

There are many legends and stories concerning the name chosen for the county, Newaygo. It is believed that the name was derived from Ottawa Indian brave, Nah-way-go, who had a reputation for bravery and strength and was known for his courage on the battlefield. Seen and admired by the area's first white settlers, Nah-way-go died sometime in the late 1830's.

In 1853, lumberman from Glenn Falls, New York, came to the area, and with a charter from John Brooks who in the same year plotted out and sub-divided what is now the City of Newaygo built a larger mill called the Big Red Mill that soon employed 200 people. A log dam was built for the mill which became the largest water-powered saw mill in the state with 120 saws. Fire destroyed the mill in 1867 but it was soon rebuilt and expanded. The mill was then sold to D.P. Clay and played a significant role in the lumbering heydays in Newaygo. The company employed up to 300 men and at its height, in 1888, had log drives of a half a billion board feet of lumber per year. Newaygo was the first county seat and a brick courthouse was built in 1886.

The nearby Croton Dam area was also thriving at this time. John Stearns, coming from Croton, New York, named the settlement after his hometown in 1850. Mr. Gauweiler, a lumberman, and Mr. Kaufman, a farmer, settled there at this time. The settlement grew as trade increased, and by 1869, Croton boasted 400 residents. However, a flood in 1881 and a fire in 1889 destroyed most of the settlements.

Other lumbering settlements started in Bridgeton (1853), Fremont (1855), Hesperia (1867), Grant (1893), and White Cloud (1870). As the settlements grew, roads were constructed and in 1849, the first state road was built from Croton and Newaygo to Muskegon. In 1854, a state road was built from Newaygo to Grand Rapids and facilitated the construction of the Big Red Mill at Newaygo. The Grand Rapids, Newaygo, and Lake Shore Rail Road came to Newaygo in 1872, connecting the city with Grand Rapids. In 1875, the rail road was extended to White Cloud.

Settlement and growth came late to the future county seat, White Cloud. Prior to 1870, there was no real growth. However, construction of the railroad in 1875 spurred new growth. When lumberman Wilcox and Morgan came to the area, there was already a settlement there, Alleyton, started by Mr. Alleyton. Wilcox and Morgan started a second settlement across the river called Morgan Station. In 1872, lumbering operations started on the White River and fast growth came to the area. At the request of the postal officials, Morgan Station was renamed White Cloud and in 1872, the Village was incorporated. Both settlements continued to grow and by 1882, they had 136 school age children. Alleyton grew larger and faster and was considered the more elegant of the two. By 1880, it had 550 residents, and 32 businesses. Unfortunately, on July 4, 1894, after already suffering from one fire, another struck, wiping out the village. It was never rebuilt, and little remains to indicate its former existence.

When the lumbering era began in the early 1800's in Michigan, it was expected to last hundreds of years. However, within approximately fifty years, the vast softwood timber resources in the Lower Peninsula, including those in Newaygo County were harvested and the slash burned over more than once. Some believe that more logs were floated down the Muskegon River than any other river in the world. It is estimated that only one out of every three trees were actually harvested, the rest having been destroyed by forest fires. The forests and the soils were forever changed as a result of clear cutting, forest fires and farming.

The crops in the area of cleared forest were used to feed the growing population in the lumbering camps. Several hundred acres were cultivated in the mid 1800's in an area of remnant prairie in what is now Big Prairie Township. The soil in this area was Sparta sand that had a 12 to 18-inch layer of mixed sand and organic material. It was devoid of trees and could be easily farmed. The fertility of the soil was fair, and good crops were produced during the first few years. After removal of the nutrients by the first few crops however, the soil was dry and subject to blowing and in some areas, two to three feet were eroded. As a result, the largest area of desert east of the Mississippi River was created. The area became a tourist attraction until it was reforested in the early 1930's. Plantations of pine now cover much of the area.

By the early 1890's, with the vast timber resources depleted, lumbering moved out of the area. By the last quarter of the 19th century, some of the easier to drain wetlands were converted to farmland. In the early 20th century, Rice Lake in Grant Township, was drained and its lakebed is now used for specialty crops. As the logging industry slowed and farming increased, a canning factory established in Fremont to market the produce, grew into a major enterprise known today as Gerber Products.

With the lumbering era over, other industries began to replace the economic focus of the area. In 1898, the marl beds just north of Newaygo were acquired by D.L. Slivens of Newaygo Manufacturing Company and a group of Grand Rapids businessmen and a cement company was formed. By 1902, the first barrels were shipped.

Not all of the land that was originally settled was suitable for farming and many farms were later abandoned. Much of this land reverted to the Federal Government and today is managed as part of the Manistee National Forest. Today, the United States Forest Service owns approximately 108,000 acres or almost 20% of the county. Other farmland was purchased for recreational uses. Forest products from the second growth forests and recreation are the chief resources of the northern two-thirds of the county. In the southern third of the county, farming and industry has evolved. With some of the largest muck farms located in the eastern half of the county, Grant is known for specialty crops. There are also significant apple and peach orchards.

The county's two hydroelectric dams on the Muskegon River produce enough kilowatts of electricity to power a city of 23,000 people. Both Croton Dam and Hardy Dam are on the National Register of Historic Places. Croton was constructed in 1906-07 and was the first hydro facility in the nation to use 110,000 volt transmission lines. Hardy went into service in 1931 and at the time was the tallest earthen dam in the world. Today it is still Michigan's tallest earthen dam and provides a 3,800 acre reservoir that is enormously popular for outdoor recreation.

Newaygo County's three largest cities incorporate all these major uses. The City of Newaygo is known for its angling opportunities for Chinook salmon, steelhead, and brown trout, as well as boating, canoeing, and kayaking. Fremont is the home of the world's leader in baby food, Gerber Products, a subsidiary of Nestle. White Cloud, with its motto emphasizing its recreation activities, "Where the North Begins and the Pure Water Flows" is the county seat.

In summary, Newaygo County has a rich human, geologic, and biological history. The geologic history shaped the landscape, providing habitat for a wide variety of living organisms. In turn, it also provided opportunity for human habitation and development. The county's diversity, exceptional surface water resources and proximity to major population centers in western Michigan make it an exceptional tourism destination today. The climate provides four seasons, each with its own special recreational opportunities.

ADMINISTRATIVE STRUCTURE

Roles of the Newaygo County Board and Parks & Recreation Commission

The Newaygo County Parks and Recreation Commission was established under the authority of PA 261 of 1965. See Table 2 for a list of the Newaygo County Parks and Recreation Board members. The Parks and Recreation Commission reports directly to the Newaygo County Board of Commissioners and has the authority to run the daily operation and management of the Commission's responsibilities. These responsibilities are managed by a hired Parks Director who is under the direction of the Parks Commission and County Administrator. The Parks and Recreation Commission meets regularly on the first Tuesday of every month at 9:00 AM. All meetings are held at the parks administration office located in the Newaygo County Visitors Center at 4684 Evergreen Drive (M-37).

General Summary of Parks and Recreation Director Responsibilities

Under the direction of the County Administrator and the Parks Commission, the Parks and Recreation Director is responsible for the following:

- Plan, develop, and administer a comprehensive program to provide multiple park facilities, marinas, trails, and campgrounds as well as recreational opportunities.
- Operations of all county-owned/operated parklands and facilities, including oversight of maintenance, administrative support, and full-time and seasonal personnel.
- In conjunction with the Parks Commission, oversee developmental and capital improvement projects within the parks.
- Inspect parks to evaluate operations and to ensure safety and enforcement of policies on a federal, state, and local level.
- Financial and other administrative functions of the Parks and Recreation Department.
- Serve as a liaison to various organizations including the Newaygo Community Recreation Authority Board, Michigan's Dragon at Hardy Dam Executive Committee, Michigan Association of County Park and Recreation Officials, and the Newaygo County Tourism Council.

There are also other parks and recreation staff members who report directly to the parks director. The staff members include full-time and temporary seasonal workers as well as an administrative assistant, and park operations supervisor housed at the Newaygo County

Table 2

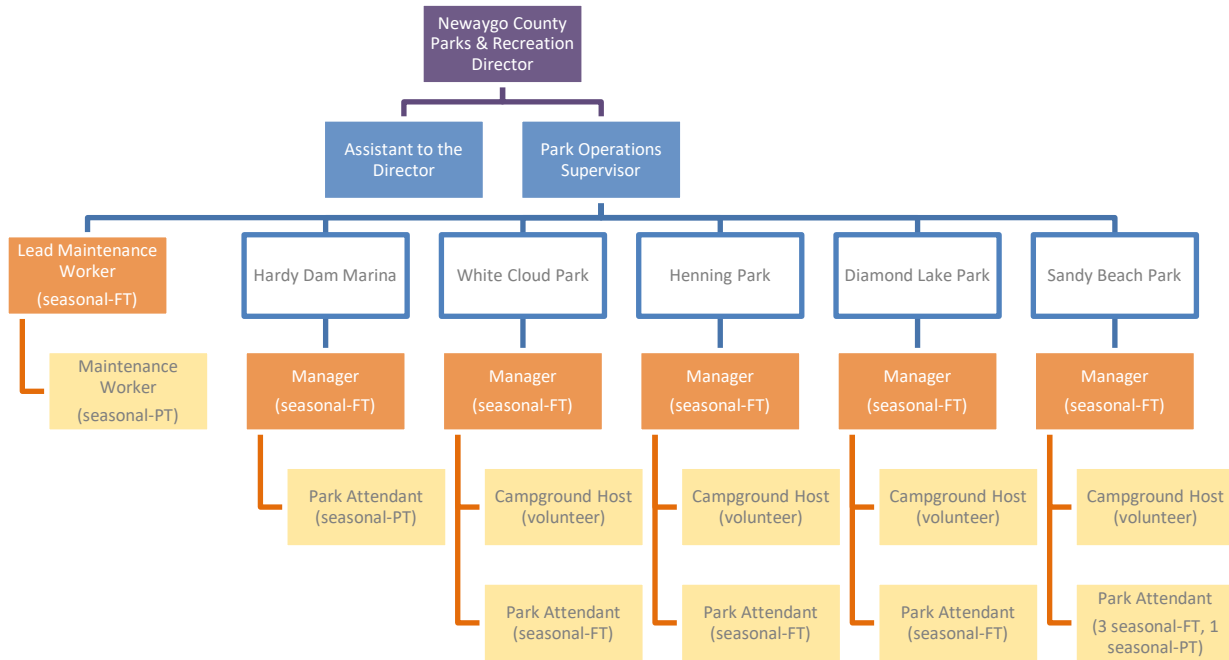
2022 Newaygo County Parks & Recreation Commission Members

Doug Harmon, Chair
Mark Guzniczak, Vice Chair
Steve Hatting, Secretary
Mark Pitzer, Exec Committee
Charles Chandler
John Clark
James Maike
Stan Stroven
Chuck Trapp
Dale Twing

Parks Director: Nick Smith

Visitors Center. Below is an organizational chart of the Newaygo County Parks and Recreation Department.

Newaygo County Parks and Recreation Organizational Chart



Annual and Projected Budgets

Table #3

Newaygo County Parks and Recreation Current and Projected Budget	
Fiscal Year 2022	Fiscal Year 2023
\$977,000	\$1,100,000

Sources of Funding

The Newaygo County parks and recreation budget has grown significantly in recent years. This trend is expected to continue, and the Parks and Recreation Commission will be seeking diverse funding sources to complete transformational capital improvements to the Park system.

The Newaygo County Parks and Recreation system is fully self-sufficient, pulling revenue from a variety of parks-generated sources. These sources consist of nightly camping fees, seasonal campsite rental fees, daily watercraft slip rental and launch fees, vehicle pass fees

and seasonal watercraft slip rental and launch fees from the various county parks. On occasion, Newaygo County may contribute loans for capital improvements, especially to assist in providing local matching funds for state, federal, and private foundation grants. The Parks system typically reimburses the county for such contributions.

Occasionally the Parks Commission benefits from special revenue or funding opportunities. For example, in 2022, the Parks Commission received revenue from timber sales. In addition, there were donations received and County ARPA funds allotted to complete portions of the Dragon Trail. Funding sources such as these are not expected annually but are certainly welcomed from time to time.

Lastly, it should be recognized that the Fremont Area Community Foundation has been a critical partner and asset to the Newaygo County Parks and Recreation Commission. Its generosity in grant funding for capital improvements has also allowed Newaygo County to leverage other grant funds for additional improvement projects.

Recreation Programming

The main role of the Newaygo County Park system is to provide self-directed recreation opportunities to visitors and area residents. These activities include fishing, swimming, camping, boating, relaxing, picnicking, non-motorized trail use, wildlife viewing, socializing, and other self-directed activities. In addition, parks occasionally host special organized activities for visitors, such as “Red, White and Blue Day” and “Harvest Festival.” There is currently no programming staff for the Newaygo County Parks and Recreation Commission; however, it is working towards securing programming staff in the future.

Role of Volunteers

The Newaygo County Parks and Recreation Commission appreciates the numerous volunteers who graciously give their time. They assist the County parks through a variety of means, including litter clean up, basic maintenance, customer service, Dragon Trail maintenance, assist with trail construction and fund-raising support for capital improvements. Volunteer service days held as needed. Examples of partnering organizations include West Michigan Mountain Biking Alliance, TrueNorth, Newaygo County Regional Education Service Agency, and Grand Public Schools.

In addition, four county parks utilize seasonal “campground hosts” who are committed to serving 32 hours per week at a park.

Lastly, many members of the Newaygo County Parks and Recreation Commission volunteer to serve on the commission. Three members are appointed and seven are volunteers. Parks and Recreation Commission members receive a \$35 per diem for commission meetings.

Relationship(s) with Other Public or Private Organizations

The Newaygo County Parks and Recreation Commission maintains working relationships with many public and private organizations. For example, the commission is partnering with the Newaygo Community Recreation Authority, a group of interested citizens and government officials (including the County Parks Director) from the City of Newaygo and the surrounding townships. In addition, development of Michigan’s Dragon Trail has spurred unprecedented public, private, and nonprofit partnerships to bring the trail to fruition, most notably partnering with Mecosta County and the West Michigan Mountain Biking Alliance.

Listed below is a sample of public and private partners of the Newaygo County Parks and Recreation Commission.

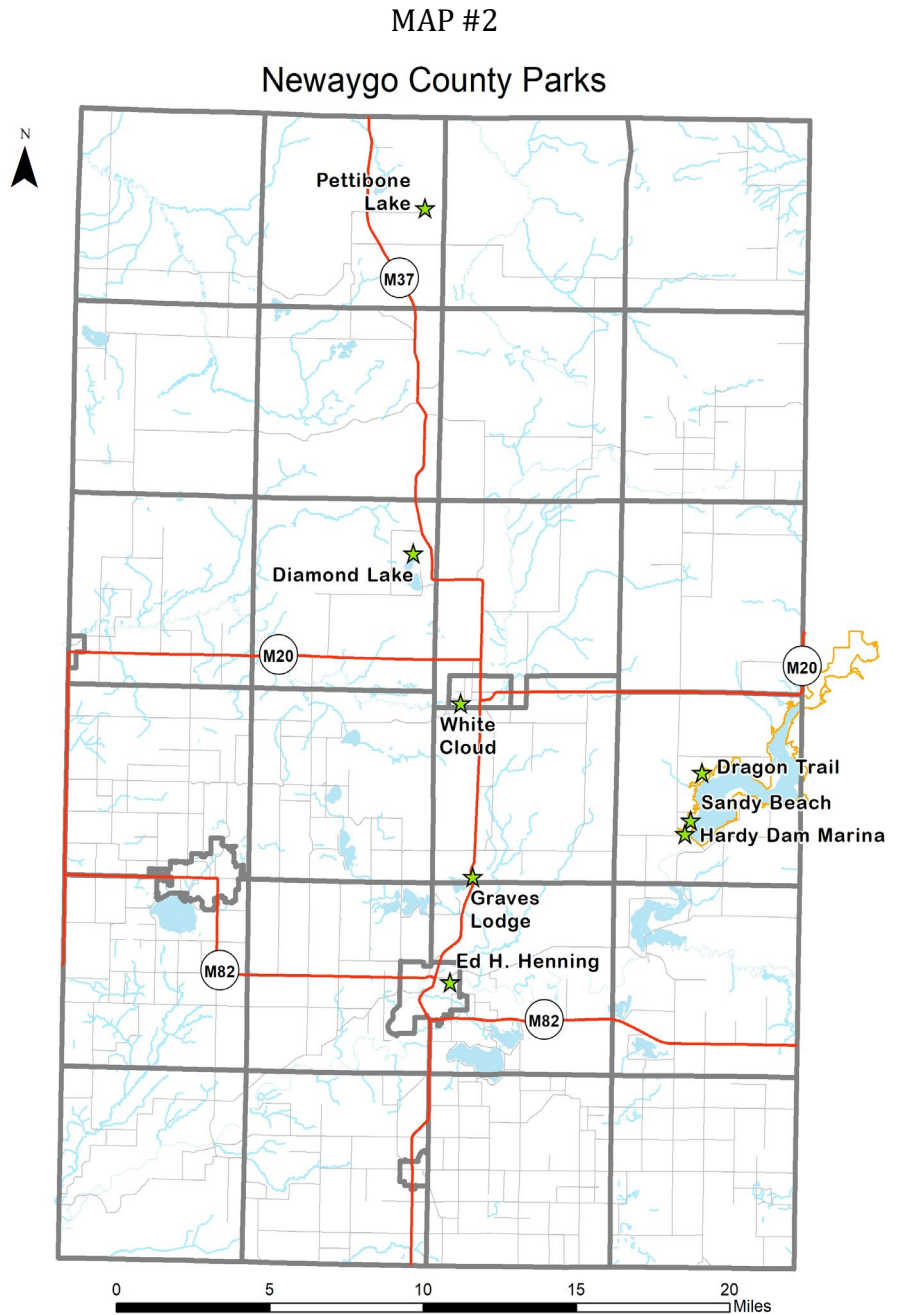
Focus	Partner Organizations
Michigan’s Dragon at Hardy Dam	West Michigan Mountain Biking Association MSU Extension, Mecosta County, Nestle Waters, MI Works!, Muskegon River Watershed Assembly, Consumers Energy, Chambers of Commerce, IMBA, township governments, Spectrum Health/Tamarac, Mecosta County CVB, Newaygo County Tourism Council
Invasive Species Control	Ottawa County Conservation District MSU Extension, Muskegon River Watershed Assembly
Snowmobile Trail Maintenance	Trail Riders Snowmobile Club, Newaygo Snow Chasers
Diamond Lake and White Cloud Trail Maintenance	North Country Trail Association (W. MI Chapter)
Volunteer Service Projects	TrueNorth, K-12 education, NCRESA, Grant Public Schools, WMMBA
ORV Rides	West Michigan Ridge Runners
Community Events	River Country Chamber of Commerce, White Cloud Police Dept., Newaygo County Sheriff, Newaygo County Emergency Management, Newaygo City Police
Henning Park Pavilion	United Way, Newaygo County PCA
Camping Cabins	NCRESA, City of Fremont, Big Prairie Township Parks, Fremont Area Community Foundation
Regional Parks	MI Association of County Parks & Recreation Officials, Newaygo County Tourism Council, Mecosta County, Big Prairie Township

RECREATION & RESOURCES INVENTORY

Methods Used to Conduct the Inventory

Several methods were used to assist in conducting an inclusive inventory. The first method used in conducting the recreation and resources inventory included a detailed review of the most recent edition of the Newaygo County Community Parks and Recreation Master Plan completed in 2017. Second, an analysis was conducted of the Newaygo County Parks website. The Newaygo County Parks Director was also enlisted to review contents of the inherited Plan and provide current, updated information.

Newaygo County operates seven parks within the county, including Michigan's Dragon at Hardy Dam. Map #2 identifies park locations, with detailed descriptions of each park laid out in the following pages.



Methods Used to Conduct the Inventory

Diamond Lake County Park

Diamond Lake County Park was originally developed by Steelcase Corporation as a recreation area for its employees. The Newaygo County Parks Department purchased the property from Steelcase. The 156-acre park with 2,000 feet of frontage on Diamond Lake is located approximately six miles northwest of the City of White Cloud at 3351 Mundy Road.



Diamond Lake County Park

The campground currently offers 4 camping cabins, 60 campsites, 24 are full hook-up (water, sewer, and electric) and the remaining 36 sites are electric. There are two bathroom/shower buildings and a shelter building. Additionally, the Park contains a sanitation station, play areas, a swimming beach, horseshoes, beach volleyball, hiking trails, picnic area, enclosed shelter building, and a nearby boat launch.

Enjoy a hike in Michigan's north woods. Starting from the trailhead at Diamond Lake County Park, adventurous hikers may trek forth on the 10-mile circular Birch Grove Trail. Through the Manistee National Forest, this trail passes through the only wildflower sanctuary (Loda Lake Wildflower Sanctuary) within the entire National Forest System. Birch Grove trail also connects with the National Park Service's 4,600 miles long North Country National Scenic Trail.



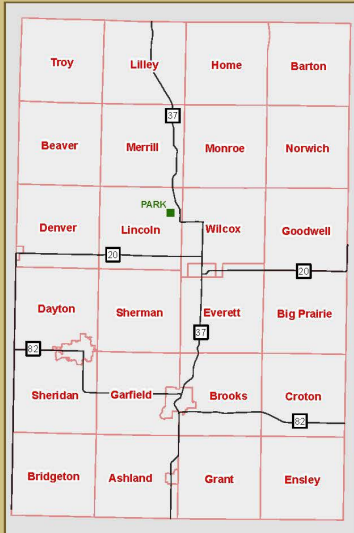
Diamond Lake County Park

Diamond Lake County Park is also adjacent to the Manistee National Forest and is the location of the Birch Grove Trailhead. This ten-mile circular trail through the Manistee National Forest passes through the only wildflower sanctuary (Loda Lake Wildflower Sanctuary) within the entire National Forest System. The Birch Grove Trail also connects with the National Park Service's 4,600 miles long North Country National Scenic Trail.

Diamond Lake County Park

3351 N. Mundy Ave, White Cloud, MI 49349
Lincoln Township

Newaygo County

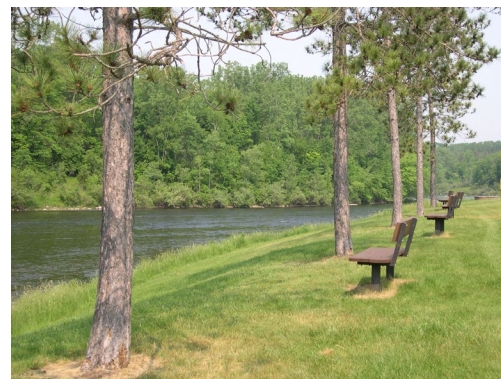


For reservations and information
call (231) 689-7340 or visit
www.countyofnewaygo.com/parks



Ed H. Henning County Park

Ed H. Henning County Park is located in the City of Newaygo at 500 Croton Road. The park sits on approximately 82 acres along the world-class Muskegon River which is known for excellent salmon and trout fishing. It is a national destination to both Newaygo County residents and non-residents. The modern campground features 60 electric and rustic sites, Wi-Fi, 2 camping cabins, bathroom/shower building and sanitation station. Sites are available for nightly and seasonal rental. There is a semi-modern group campground for organized groups; a free day-use area which is exempt from the County Park's vehicle permit. Additionally, this park features picnic areas, a covered pavilion, a swimming pond, baseball diamonds, play areas, a volleyball court, pickleball courts, group camping, and a disc golf course coming soon! The boat launch is available all year round.

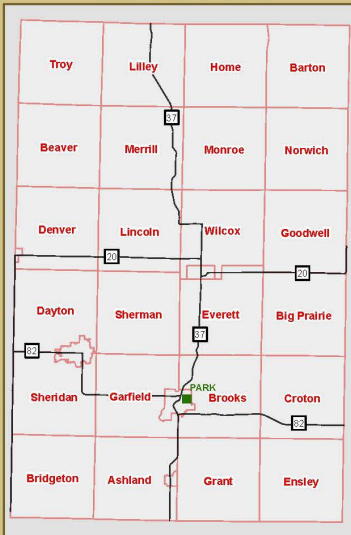


Ed H. Henning County Park

Ed H. Henning County Park

500 E. Croton Dr, Newaygo, MI 49337
City of Newaygo

Newaygo County



For reservations and information
call (231) 689-7340 or visit
www.countyofnewaygo.com/parks



Sandy Beach County Park

Sandy Beach County Park is located at 6926 30th Street in Big Prairie Township along the shore of the 4,000-acre Hardy Pond. The park is 129 acres and offers beautiful waterfront views for campers. This park offers 176 campsites, 26 of which are full hook-up, and 11 camping cabins. A three-lane modern boat launch and dock rentals are available. The campground has 2 bathroom/shower buildings and a sanitation station. Additionally, this park features a swimming beach, picnic area, play areas, and a large semi-modern group camping site. A pavilion is also available for reservations adjacent to the official trailhead for Michigan's Dragon at Hardy Dam.



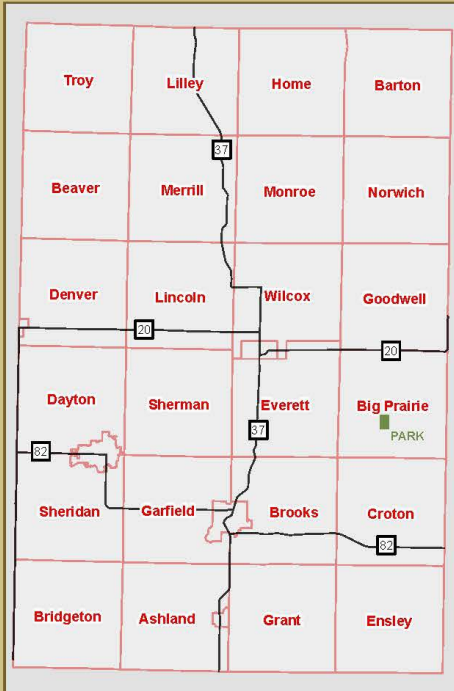
Sandy Beach County Park

A portion of Sandy Beach County Park is leased from Consumers Energy. Of the 129 acres, Newaygo County owns 80 acres and leases the remaining 49 acres. As part of the lease agreement, revenues from the park must be used to support and make improvements to the site.

Sandy Beach County Park

6926 E 30th St, White Cloud, MI 49349
Big Prairie Township

Newaygo County



PARK FACILITIES

- | | |
|-----------------------|----------------------|
| Park Office | Boat Trailer Parking |
| Bath House | Beach |
| Vault Toilet | Handicap Parking |
| Dump Station | Volleyball Court |
| Dumpster | Horseshoes |
| Shelter / Picnic Area | Basketball Court |
| Boat Launch | Play Area |
| Boat Pier | |



For reservations and information
call (231) 689-7340 or visit
www.countyofnewaygo.com/parks



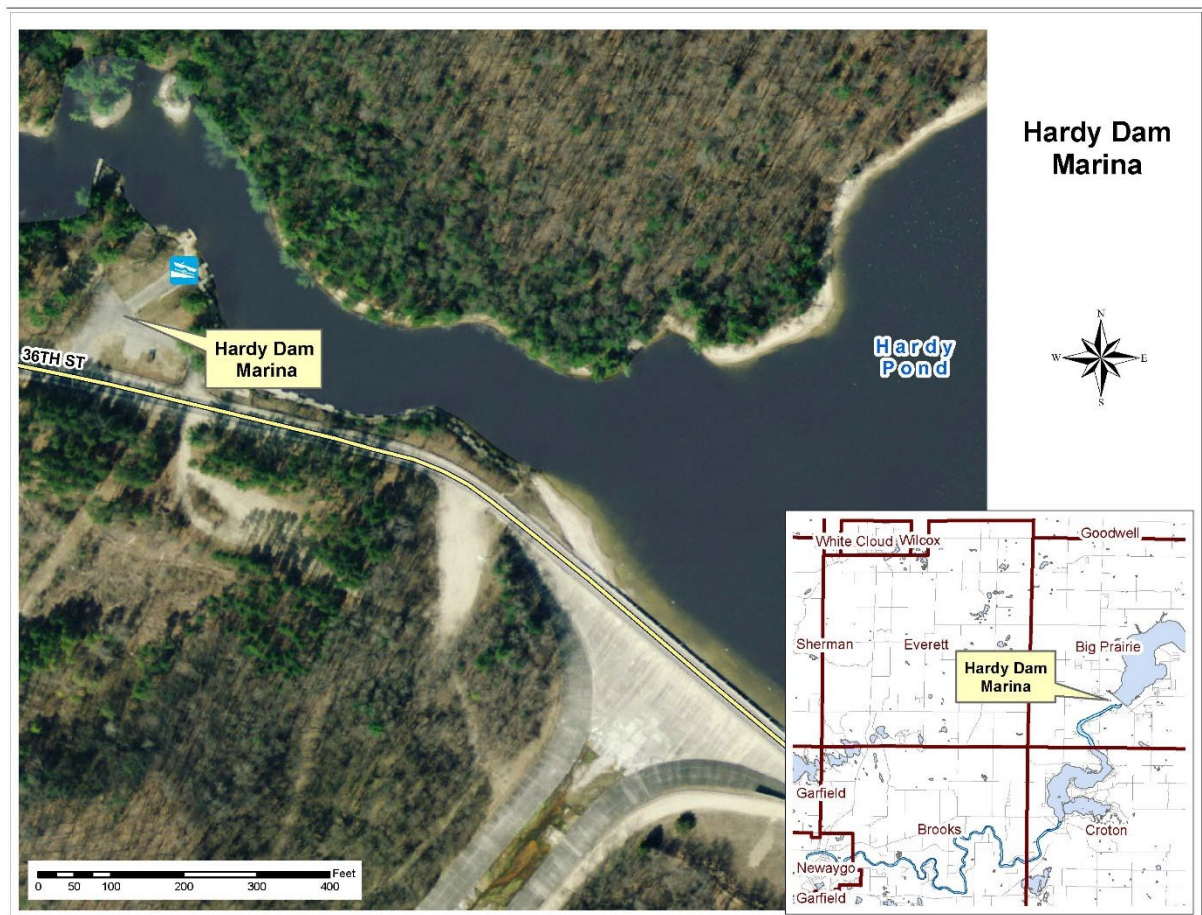
Hardy Dam County Marina

Hardy Dam County Marina is located at 6619 36th Street, in Big Prairie Township. The 2.2-acre marina lies in a cove near Hardy Dam and on the 4,000-acre Hardy Pond with 17 miles of open waterway and miles of undeveloped shoreline. The marina offers 35 slips for seasonal rental, a boat launch, potable water, vault toilets, and pump-out service. There is also room for fishing and picnicking. This park also has two parking lots on the South side of the road, which is a trailhead for Michigan's Dragon at Hardy Dam and the Hardy Dam Rustic Trail. Vehicle permits are required in all marina parking lots.



Hardy Dam County Marina

It is important to note that Hardy Dam County Marina is leased from Consumers Energy. As part of the lease agreement, revenues from the park must be used to support and make improvements to the site.



Pettibone Lake County Park

Pettibone Lake County Park is the smallest of the Newaygo County parks. The 2.3-acre park is located at 490 Pettibone Drive in northern Newaygo County. This day-use only park overlooking beautiful Pettibone Lake offers great fishing with a swimming beach, boat launch, and picnic shelter (first come, first served) and picnic grills. No camping is permitted.



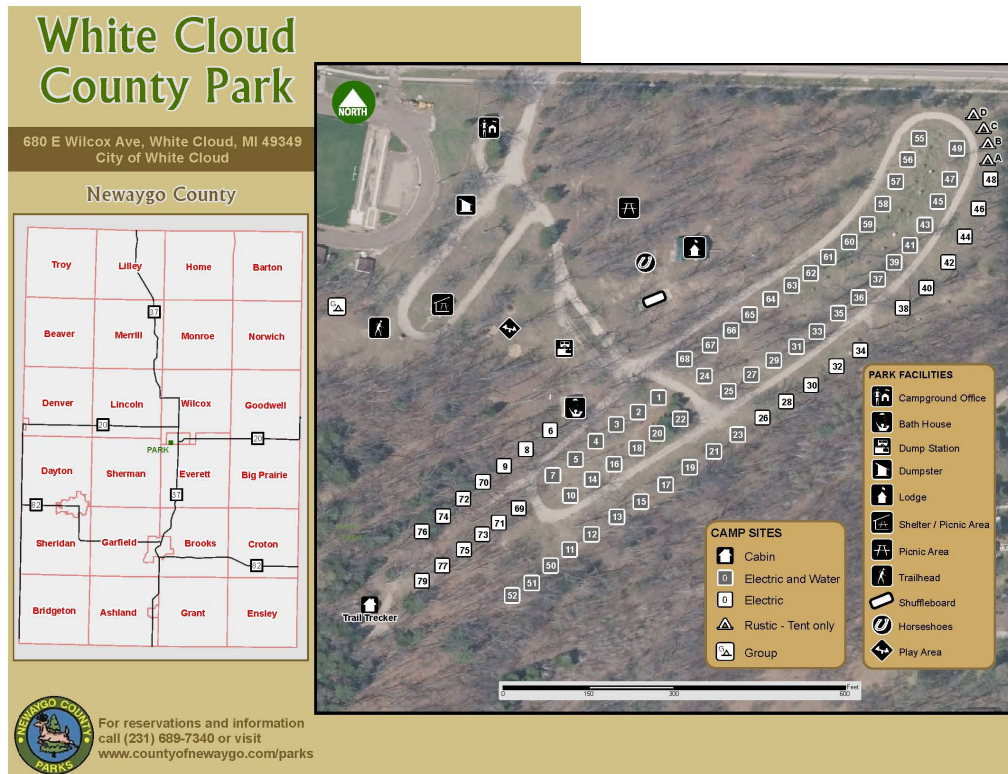
Pettibone Lake County Park

White Cloud County Park

White Cloud County Park is a former state park which rests on over 80 acres including a half mile of wild scenic White River frontage. This park offers 86 campsites (all electric and many with water), group sites, clean restrooms & hot showers, dump station, playground, a large enclosed pavilion with kitchen & fireplace, picnic area with shelter and an 8-mile White River walkway with a connecting trail to North Country National Scenic Trail.



White Cloud County Park



Michigan's Dragon at Hardy Dam (under construction)

Michigan's Dragon at Hardy Pond is a non-motorized hiking and biking trail being developed around the Hardy Pond in Mecosta and Newaygo counties. The trail will stand out as a significant and unique outdoor adventure destination for people from around the state, region, nation and world. It promotes west Michigan's triple bottom line: financial, social and environmental performance measures. Hardy Pond boasts over 50 miles of shoreline and over 4,000 acres of fresh water. The Hardy Pond enjoys a long history as a premier recreational destination for tourists and residents alike.

Michigan's Dragon at Hardy Pond will span over 40+ miles along the banks of the Hardy Pond upon the Muskegon River as it winds through Mecosta and Newaygo counties, crossing the massive Hardy Dam. This project is strategically located within 45 minutes of Grand Rapids, 3 hours from Detroit and 3.5 hours driving time from downtown Chicago.

As of 2022, over half of the Dragon had been completed and opened to the public. In September 2022, Newaygo County allocated \$1.05 million of its ARPA funds to complete construction of the trail. Notably, the allocation will allow for the creation of a fully ADA-accessible mile of trail starting at Big Prairie Township's Operators Park on the East side of Hardy Dam. The trail is expected to be complete in 2023.

<https://www.thedragon.us/the-dragon-trail/>



Proposed Michigan's Dragon Trail at Hardy Dam (green line)

Graves Lodge and Welcome Center

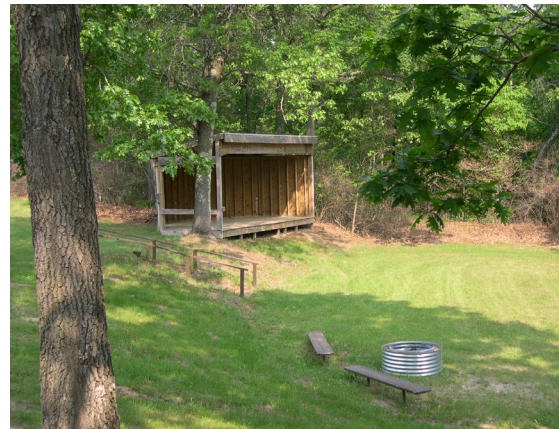
Located behind the Newaygo County Parks and Recreation Department Administrative Office and the Newaygo County Welcome Center at 4684 Evergreen Drive (M-37) is the historic John Graves Lodge. The lodge is located on nearly 90 acres overlooking scenic Little Placid Lake. Newaygo County Parks and the Newaygo Community Recreation Authority have partnered to make the lodge available for group and meeting rentals. It features accessible restrooms and has a maximum capacity of 80 people. In addition to the lodge, the



property also provides sledding, an outdoor stage/theatre, and trailhead for the Newaygo County snowmobile trail and the North Country National Scenic Trail.

Water Trails

A water trail is a designated route on a navigable waterway such as a lake, river, canal or bay, that is designed and managed to create a positive outdoor recreation experience for the user. Water trails feature well-developed access points, often are near significant historical, environmental or cultural points of interest and often have nearby amenities like restaurants, hotels and campgrounds.



John Graves Lodge

The website www.michiganwatertrails.org designates the Muskegon River from the City of Newaygo downstream to Muskegon Lake as the 41.2-mile Muskegon River Water Trail. This was designated in conjunction with the Lake Michigan Water Trail Plan and associated efforts. The plan is available for download at <http://wmsrdc.org/publications/>. The Lake Michigan Water Trail spans more than 760 miles of Michigan's Lake Michigan shoreline. From its western-most access point in Michigan's Upper Peninsula, south along the Lake Michigan shoreline to Indiana, the trail includes:

- 287 public access sites available for paddlers
- 55 campgrounds located at shoreline access sites
- The Lake Michigan Watershed includes 32 major river systems that provide access to additional water trails in Michigan.

When completed, the Lake Michigan Water Trail will offer safe, legal and adequate access around the four Great Lakes States of Michigan, Wisconsin, Illinois and Indiana. The 1,600-mile Lake Michigan Water Trail will be the longest continuous- loop water trail in the world. Wisconsin completed detailed inventories for access to Lake Michigan in support of trail development. In 2011, 75 miles from Chicago to New Buffalo was designated as the Lake Michigan Water Trail National Recreation Trail by the National Parks Service. In 2014, Michigan's Regional Planning Councils completed inventories of access sites along the Lake Michigan shoreline from Wisconsin to Indiana. There are approximately 287 paddler-friendly, public access sites along the Lake Michigan shoreline and more than 215 within connecting harbors, lakes and rivers.

Motorized Trails

Newaygo County connects with hundreds of miles of comprehensive trail network for All-Terrain Vehicle (ATV) & Off-Road Vehicle (ORV) recreation. In addition, the roads of Newaygo County and some U. S. Forest Service roads are ORV friendly. Motorized trails are

beyond the purview of the Newaygo County Parks & Recreation Commission but are important to recreation and tourism in Newaygo County, nonetheless. The Newaygo County Parks Commission has embraced the popularity of ORVs and has opened Diamond Lake County Park and White Cloud County Park to ORV traffic. Now visitors can ride their ORV right from their campsites. Additional information and trail maps are available at the following website addresses:

<https://newaygocountyexploring.com/orv-atv/>
<https://newaygocountyexploring.com/snowmobiling/>

Accessibility Assessment

The Newaygo County Parks and Recreation Commission has been making improvements to its park system for several years. One significant motivation for improvement has been to make parks accessible for all people. In 2021, Newaygo County hired Disability Network West Michigan to conduct detailed accessibility review for county parks. This information will be used by the Parks Director and the Parks and Recreation Commission to help prioritize projects within the County’s Recreation Capital Improvement Plan. Due to the prohibitively large size of the accessibility review reports, summary tables are provided below. There are two parks that did not have an accessibility review conducted: Pettibone County Park and Michigan’s Dragon. Pettibone County Park was recently converted into day-use park, and the Dragon was not yet completed at the time this plan was written and is a recreation trail.

The following tables include a 1 through 5 accessibility rating assigned by the parks director, along with identified accessibility barriers and recommendations according to accessibility standards of the 2010 American’s with Disabilities Act (ADA) and 2015 Architectural Barriers Act (ABA). Ratings were assigned according to the following scale:

- 1 = none of the site elements meet 2010 ADA Standards for Accessible Design;
- 2 = some;
- 3 = most;
- 4 = all; and
- 5 = the facility meets the Principals of Universal Design.

Diamond Lake County Park		Accessibility Ranking: 2
Area		Recommendation
Office	Parking	Add a van accessible parking space and access aisle. Van Accessible Spaces need to be 11 ft wide with
	Accessible Route	Add accessible parking and an accessible route to building from the parking. Routes must be at least 36 inches wide, firm, stable, and slip resistant, have a running slope not greater than 1:20 and a cross slope not greater than 1:48.
	Door	Add ramp with landing with required door maneuvering clearance.
	Door Handle	Install lever style door handle.
Bathhouse 1 (near shelter)	Accessible Route	Add accessible route to building and entrances.
	Parking	Pour a van accessible spot with access aisle and connect to accessible route to building.

	Women's Restroom	Widen door. Lower mirrors. Combine 2 stalls to create accessible stall. Lower towel dispenser and coat rack. Add grab bars.
	Women's Showers	Combine to make it larger. Add grab bars and seat. Add movable shower head. Get rid of threshold.
	Men's Bathroom	Make the entrance accessible. Widen door. Lower mirrors and towel dispenser. Combine two toilet stalls and add grab bars. Lower coat hooks.
	Men's Shower	Combine to make it larger. Add grab bars, seat. and movable shower head. Get rid of threshold.
Bathhouse 2 (RV Camping): Shower	Parking	Add striping for spots and access aisle. 8 ft wide parking spaces sharing an 8 ft wide access aisle.
	Shower Controls	Raise to be within the range.
	Shower Grab Bars	Install grab bar along control wall.
	Shower Spray Unit	Install handheld spray unit that is moveable.
	Threshold	Grind down to create transition.
	Sign	Add sign indicating accessible shower stall.
	Shower Seat	Install transfer seat.
Bathhouse 2: Men	Coat Hook	Lower to 48 inches or below.
	Door Threshold	Grind or add transition.
	Sink Pipe	Add insulation to sink pipes.
	Toilet Stall	Remove one sink and widen stall.
		Move toilet closer to wall. Remove sink to make stall at least 60 inches wide. Put flush control on open side of toilet. Install grab bars properly. Make sure TP dispenser does not obstruct grab bar.
	Stall Door Handle	Install loop style handle on both sides of door.
	Mirror	Lower to be 40 inches above ground. Counter is at 34 inches.
Bathhouse 2: Women	Coat Hook	Lower to 48 inches or below.
	Door Threshold	Grind or add transition.
	Sink Pipes	Add insulation to sink pipes.
	Toilet Stall	Remove one sink and widen stall.
		Move toilet closer to wall. Remove sink to make stall at least 60 inches wide. Put flush control on the open side of toilet. Install grab bars properly. Make sure TP dispenser does not obstruct grab bar.
	Stall Door Handle	Install loop style handle on both sides of door.
	Stall Door	Add self-closing door hardware.
	Mirror	Lower to be 40 inches above ground. Counter is at 34 inches.
Enclosed Shelter	Parking	Add van accessible parking space and access aisle connecting to building via an accessible route.
	Accessible Route	Add accessible parking and an accessible route to building.
	Threshold	Replace with compliant threshold.
	Entry Pad	Add accessible route and replace landing. Make sure there is enough maneuvering clearance for the door.
	Light Switches	Lower to be under 48 inches and within the reach range.
Pit Toilet	Parking	Add van accessible parking space and an access aisle.
	Accessible Route	Add accessible route and connect to access aisle of accessible parking.
	Pit Toilet	Widen the door and make it swing outward. Move toilet. Add grab bars. Make concrete pad outside door larger.
Pike Cabin	Parking	Stripe for van accessible space.
		Pour 3 ft wide strip along edge to have 16 ft required for van access.
		Add 3 ft of concrete on side to accommodate van access requirements.
	Grill and Fire Ring	Accessible routes to all elements.
		Pour firm, stable, clear ground space
	Door Handle	Install lever style door handle.

	Door Threshold	Install compliant threshold.
	Counter	Lower to be within the range.
	Ramp	Install compliant handrail on both sides of ramp.
		Rebuild to have compliant slope.
		Rebuild to have compliant landing.
	Outlet Above Counter	Move the outlet to the side of the counter.
	Fire Alarm	Add alarm with visible signal
	Bedroom Access	Alter bed to create access from the end.
	Coat Hooks	Move down to be within 34 to 48 inches.
	Heat and Electric Controls	Move to be within 15 to 48 inches above the ground.
Bass Cabin	Parking	Add accessible parking
	Accessible Route	Add accessible route to all elements and compliant ramp to cabin.
	Grill and Fire Ring	Pour compliant clear ground space for fire ring and grill.
Perch Cabin	Parking	Add accessible parking
	Accessible Route	Add accessible route to all elements.
	Grill and Fire Ring	Pour compliant clear ground space for fire ring and grill.
Bluejill Cabin	Parking	Stripe for van accessible space.
		Pour 2 ft wide strip along edge to have 16 ft required for van access.
		Add 2 ft of concrete on side to accommodate van access requirements.
	Accessible Route	Add accessible route to all elements.
	Grill and Fire Ring	Pour compliant clear ground space for fire ring and grill.
Beach Area	Parking	Add a van accessible parking space.
	Play Area	Install accessible route to all of the elements.
	Accessible Route	Add accessible route to all tables.
	Grill and Fire Ring	Add accessible clear ground space.
	Picnic Tables	Add accessible picnic tables.
		Add required clear ground space.
	Beach	Add accessible route to the water. Look into Mobi Mat.
Play Area	Parking	Add accessible parking space to access aisle to accessible route to play elements.
	Accessible Route	Add accessible route to all of the elements.
	Basketball Court	Add accessible route.
	Play Set	Build compliant play set transfer system to play set and elevated components.

Henning County Park		Accessibility Ranking: 2
Area		Recommendation
Welcome Office	Route to Office	Regarding slope to be less than 2.86 degrees/5%. If the slope is above 2.86 degrees, it will require the installation of handrails. It currently exceeds the maximum allowable slope for a ramp, 4.76 degrees/8.3%
		Regrade to have slope no greater than 4.76 degrees or 8.33% (1:12) and install handrails.
	Route to Office/handrail	Regrade to have compliant slope and add handrails compliant with 505.
	Office Door	Remove or move mounted shelf to allow for 18 inches of clear space on the latch side of the door.
	Door Threshold	Remove threshold to allow accessible entry and exit to the building. The flatter the better.
	Doorknob	Install lever style door handle.
	Green Shelf	Install legs on both sides of green shelf to make it detectable by a person using a cane to navigate.
	Light Switches	Reconfigure space to create clear floor space for operable switches.
		Lower light switches for centerline to be at or below 48 inches.

	Mounted Service Counter	Install new sales counter that is maximum 36 inches high.
Bathhouse 1(near-park entrance): Men's	Sidewalk to Bathroom	Grind down to bevel or add a small amount of concrete/asphalt to make the transition more gradual and easier for someone using a wheelchair or walker.
	Bathroom Sign	Install sign with raised characters compliant with 703. Install sign with braille
		Install sign compliant with 703 within the correct character ranges.
	Bathroom Door	Remove obstruction to maneuvering clearance.
	Door Handle	Move door handle to be between 34 to 48 inches of height above the ground.
	Door Pressure	Adjust closer to lessen the force needed to open the door. Rehang door or trim the door frame or door edge to prevent sticking.
	Mirror	Lower mirror to be no more than 40 inches above the floor.
	Sink	Provide 27 inches of clearance.
	Sink Pipe	Insulate pipes with foam or rubber protective casing to prevent leg injuries.
	Toilet Stall	Remove urinal and make the whole area into an accessible stall. Extend stall to be at least 56 inches deep.
	Side Grab Bar	Make stall accessible and install 42-inch grab bar that is located no further than 12 inches from the rear wall and extends at least 54 inches forward.
		Make stall accessible and install 42-inch grab bar that is located no further than 12 inches from the rear wall and extends at least 54 inches forward.
	Rear Grab Bar	Make stall accessible and install rear grab bar that is 36 inches long and extends 12 inches toward the side wall from the center line of the toilet and also extends 24 inches toward the open side, from the center line of the toilet.
	Toilet Paper Dispenser	Move toilet paper dispenser to be either at least 12 inches above the grab bar or 1.5 inches below.
	Stall Door Handle	Install door handle on inside of the stall.
	Shower Stall	Install ramp to entrance or remove raised platform, widen door, and make shower compliant with 608.
Bathhouse 1(near-park entrance): Women's	Sidewalk to Bathroom	Grind down to bevel or add a small amount of concrete to make the transition more gradual and easier for someone using a wheelchair or walker.
	Bathroom Sign	Install sign with raised characters. Install sign with braille
		Install sign compliant with 703 within the correct character ranges.
	Door Pressure	Adjust closer to lessen the force needed to open the door. Rehang door or trim the door frame or door edge to prevent sticking.
	Sink	Raise sink to provide required knee clearance.
	Sink Pipe	Insulate pipes with foam or rubber protective casing to prevent leg injuries.
	Sink Faucet	Install faucet that does not require tight grasping, pinching, or twisting.
	Toilet Stall	Remove second toilet and make the whole area into an accessible stall. Extend stall to be at least 56 inches deep.
	Side Grab Bar	Make stall accessible and install sidewall grab bar that is at least 42 inches long. Make stall accessible and install 42-inch grab bar that is located no further than 12 inches from the rear wall and extends at least 54 inches forward.
	Rear Grab Bar	Make stall accessible and install rear grab bar that is 36 inches long and extends 12 inches toward the side wall from the center line of the toilet and also extends 24 inches toward the open side, from the center line of the toilet.
	Toilet Paper Dispenser	Move toilet paper dispenser to be either at least 12 inches above the grab bar or 1.5 inches below.
	Toilet Stall Door	Make stall accessible and install door with at least 32 inches of clear space. Make stall accessible and install self-closing door.
	Stall Door Handle	Install door handle on inside of the stall.
	Coat Hook	Lower Coat Hook to be within the reach ranges. Must be below 48 inches.

	Shower Stall	Install ramp to entrance or remove raised platform, widen door, and make shower compliant with 608.
Bathhouse 2 (in campground): Men's	Pathway to Bathhouse	Repave pathway to fix cracks and threshold issues and make sure the slope is compliant with at 1:20 running slope. If it is between 1:20 and 1:12, there must be handrails installed.
	Bathroom Sign	Install Sign Compliant with 703, containing raised characters, and braille
		Install sign compliant with 703
		Install Bathroom Sign Compliant with 703.
	Door	Exterior doors are not required to comply with 5 lbs of force, however, this sticky door could prevent someone from accessing the bathroom.
	Door Closer	Adjust door closer to allow at least 5 seconds
	Mirror	Lower mirrors to be 40 inches or less above finished floor.
	Coat Hooks	Lower the coat hooks to be within the proper reach ranges, no higher than 48 inches above the ground.
	Sinks	Raise sinks to provide 27 inches of knee clearance that extends at least 8 inches under the sink.
	Sink Pipes	Put insulation around bare sink pipes to prevent someone from scratching or burning themselves.
	Light Switch	Lower Light switch and plug receptacle so that the centerline is 48 inches
	Outlets	Lower outlets. Whether this is obstructed or unobstructed, it is above the allowable reach range. If sinks stick out between 20 and 25 inches, the outlet should be no higher than 44 inches. If they are less than 20 inches, the outlet can be 48 inches above the ground.
	Toilet	Move toilet so that they center line is within 16 - 18 inches from the side wall.
	Toilet Stall	Get rid of one of the toilets and combine both stalls to make an accessible stall.
	Toilet Seat	Raise toilet or put risers on the toilet seat to have it be within the 17 - 19 inches above the floor.
	Side Grab Bar	Install side grab bar that is at least 42 inches long and located no more than 12 inches from the rear wall. The end of the grab bar must extend 54 inches from the rear wall.
	Toilet Paper Dispenser	Move dispenser below grab bar or up to be more than 12 inches above the grab bar.
	Rear Grab Bar	Combine stalls and install proper rear grab bars.
	Toilet Stall Door	Combine both stalls and install a door that provides at least 32 inches of clear width.
		Install new self-closing hinges
	Stall Door Handle	Install a loop handle on the inside of the stall door.
Bathhouse 2 (in campground): Women's	Pathway to Bathhouse	Repave pathway to fix cracks and threshold issues and make sure the slope is compliant with at 1:20 running slope. If it is between 1:20 and 1:12, there must be handrails installed.
	Bathroom Sign	Install Sign Compliant with 703, containing raised characters, and braille.
	Door Closer	Adjust door closer to allow at least 5 seconds for people to move through the doorway.
	Mirror	Lower mirrors to be 40 inches or less above the finished floor.
	Coat Hooks	Lower the coat hooks to be within the proper reach ranges, no higher than 48 inches above the ground.
	Sinks	Raise sinks to provide 27 inches of knee clearance that extends at least 8 inches under the sink.
	Sink Pipes	Put insulation around bare sink pipes to prevent someone from scratching or burning themselves.
	Outlets	Lower outlets. Whether this is obstructed or unobstructed, it is above the allowable reach range. If sinks stick out between 20 and 25 inches, the outlet should be no higher than 44 inches. If they are less than 20 inches, the outlet can be 48 inches above the ground.
	Toilet	Move toilet so that they center line is within 16 - 18 inches from the side wall.
	Toilet Stall	Get rid of one of the toilets and combine both stalls to make an accessible stall.

	Toilet Seat	Raise toilet or put risers on the toilet seat to have it be within the 17 - 19 inches above the floor.
	Side Grab Bar	Install side grab bar that is at least 42 inches long and located no more than 12 inches from the rear wall. The end of the grab bar must extend 54 inches from the rear wall.
	Toilet Paper Dispenser	Move dispenser below grab bar or up to be more than 12 inches above the grab bar.
	Rear Grab Bar	Combine stalls and install proper rear grab bars.
	Toilet Stall Door	Combine both stalls and install a door that provides at least 32 inches of clear width.
	Stall Door Handle	Install loop style handles on both of the doors.
	Shower Stalls	Widen the entry to at least 32 inches. Knock out the partition between the bench and shower area. Fill in the lowered floor to create a zero-step surface. Lower the controls. Install and moveable shower head with a hose. Reposition Grab Bars.
Blue Heron Cabin	Accessible Parking	Put in a paved, van accessible parking spot with a 11 ft wide space and a 5 ft Access Aisle that connects to the ramp for both Cabins. The spot will also be required to have signage.
		Pave a parking area for each cabin.
	Parking Sign	Install a van accessible parking sign with the new Michigan Go Logo that is at least 60 inches above the ground.
	Ramp Landing	Install landing at the bottom of the ramp that is at least 60 inches long and the width of the ramp.
	Handrail	Install compliant handrail on the cabin side of the ramp.
		Install handrail that is a compliant height, between 34-38 inches.
		Install handrail that has the proper extensions on both the bottom and top of the ramp.
	Door Threshold	The threshold at a doorway shall be no higher than 1/2 inch.
	Door Handle	Install a lever style door handle.
	Bed and Wall Clearance	Install slightly more narrow bunks to allow for someone in a wheelchair to get next to a bed.
	Coat Rack	Take 1 inch off of the outside of the rack to make sure it does not protrude more than 4 inches.
		Move coat rack down to be within the 48-inch reach range.
	Signs	Hang signs to indicate the bedrooms.
	Outlets Over Counter	Lower outlets to be no higher than 46 inches
	Controls for Systems	Move components to be within the reach ranges. Provide extension for fan controls for individuals who may not be able to reach.
	Patio	Pave around the side of the ramp to provide access to the patio and fire ring.
	Fire Alarm	Install fire alarms with flashing signals.
	Striping	Parking should be striped with 2, 8 ft stalls with an 8 ft access aisle. The current formation does not allow 16 ft of use for a van accessible spot.
Baseball Field	Route to Team and Player Seating	Connect the parking lot to the baseball fields with a compliant accessible route that connects both sides of player seating on both fields.
	Wheelchair Space	Cut off end of bench to make a wheelchair space that is 36 inches wide in each dugout.
		Install accessible route to all dugouts and make sure they connect to wheelchair spaces.
	Wheelchair Space: Spectator	Make sure there is an accessible wheelchair space provided, on a firm, stable, slip resistant surface, on an accessible route, when bleachers are installed.
Pickle Ball Courts	Parking	Pave spot for a Van Accessible parking space that is 11 ft wide with at 5 ft access aisle, and make sure it is marked with proper signage.
	Accessible Parking Sign	Pave an accessible spot and install a compliant sign.
	Accessible Route	Install and accessible route that connects accessible parking to the courts.

	Wheelchair Spaces	Provide at least 1, 36 by 48-inch wheelchair seat near a bench on each side of the courts.
Hardy Dam County Park		Accessibility Ranking: 2
Area		Recommendation
Marina	Accessible Parking	Establish total number and install proper amount of van accessible and accessible parking spaces.
		Pour accessible surface.
Office	Accessible Route	Add accessible route to the building from accessible parking spaces
	Entry	Provide ramped entry to door with proper landing and maneuvering clearance.
	Door Handle	Add lever style door handle.
	Door Threshold	Ramp entrance with landing and change threshold to compliant.
	Turning Space	Make sure to provide turning space.
Docks	Ramp	Regrade ramp to have compliant slope
	Bottom Ramp Landing	Regrade to have less than 2% slope in any direction.
	Route To Launch Area	Repave route to have smooth surface.
	Route; Cross Slope	Regrade to be less than 2%
	Route To Launch Area	Add handrails to construct as ramp.
	Landing On Accessible Route	Regrade to have less than 2% cross slope in any direction.
	Route To Launch Area	Fix slopes, add handrails and connect to accessible parking.
Restroom; Near Office	Utility Dock/other Docks	Add accessible route to the dock from accessible parking.
	Accessible Route	Add accessible route from accessible parking.
	Door Threshold	Patch with concrete to smooth and even out the transition.
	Rear Grab Bar	Move grab bar to the right (toward the sidewall) by 4 inches.
	Side Grab Bar	Move forward 2 inches.
Restroom; Parking Area	Door Closer	Adjust door closer to allow 5 seconds for someone to get through the door.
	Accessible Route	Add accessible route from accessible parking.
	Rear Grab Bar	Move grab bar to the right (toward the side wall) by 3 inches.
	Side Grab Bar	Move forward 2 inches.
	Door Closer	Adjust door closer to allow 5 seconds for someone to get through the door.
Picnic Areas	Maneuvering Space	Level out maneuvering space and make even with door. Make sure slope does not exceed 2% in either direction.
	Accessible Route	Add accessible route to all elements.
	Benches	Add wheelchair seating space 36 by 48 inches directly adjacent to the bench.
	Ground Space; Picnic Tables	Add accessible route and compliant clear ground space around the picnic tables.
	Ground Space; Grill, Fire Ring	Add accessible route and compliant clear ground space.
	Picnic Tables	Add at least one picnic table with mobility features.

Newaygo County Visitor Center & Graves Lodge		Accessibility Ranking: 3
Area		Recommendation
Graves Lodge	Accessible approach and entrance	<ul style="list-style-type: none"> • Stripe accessible parking in accordance with 208.2 for the total number of spaces provided in the lot. These spots should be as level as possible. Based on slope measurements (indicated above), accessible spots should be placed to the left of the walkway for the Graves Lodge and the Welcome Center. The left side has the lower cross slope for both buildings. Identify parking spaces with signs that are 60 inches above the ground and contain the international symbol of accessibility or the accessible icon. • Install a sign on the side door that indicates that the accessible entrance is around the front of the building. Make sure the sign has the international symbol of accessibility or the accessible icon. • Fix thresholds going in both entrances and make sure they are no higher than ¼ inch.
	Access to Goods and Services	Fix and extend ramp to create accessible route between main area and restrooms.
	Access to Public Toilet Rooms: Left	<ul style="list-style-type: none"> • Install sign compliant with 703 centered in the 18 inches on the latch side (left) of the door. (https://www.access-board.gov/ada/#ada-703) • Adjust door closer to slow the speed of the door closing so that it takes 5 seconds for the door to go from 90 degrees to 12 degrees. • Lower the mirror to have a baseline of 40 inches maximum. • Insulate pipes below sink. • Lower soap dispenser to 48 inches. • Move sidewall grab bar backwards to be 12 inches from the rear wall. • Move toilet paper dispenser below the grab bar. Make sure there is 1.5 inches of clearance between them. Make sure the dispenser is above 15 inches from ground. • Move rear wall grab bar over to extend 12 inches from the center of the toilet towards the wall and 24 inches toward the open side. • Switch toilet tank to have flush controls on open side.
	Access to Public Toilet Rooms: Right	<ul style="list-style-type: none"> • Install sign compl with 703 centered in the 18 inches on the latch side (left) of the door. (https://www.access-board.gov/ada/#ada-703) • Adjust door closer to slow the speed of the door closing so that it takes 5 seconds for the door to go from 90 degrees to 12 degrees. • Lower the mirror to have a baseline of 40 inches maximum. • Insulate pipes below sink. • Lower soap dispenser to 48 inches. • Move sidewall grab bar backwards to be 12 inches from the rear wall. • Move toilet paper dispenser below the grab bar. Make sure there is 1.5 inches of clearance between them. Make sure the dispenser is above 15 inches from ground. • Move rear wall grab bar over to extend 12 inches from the center of the toilet towards the wall and 24 inches toward the open side.
Welcome Center	Accessible approach and entrance	<ul style="list-style-type: none"> • Install signs at inaccessible entrances to show where the accessible entrance is. • Install extension on lock switch to make it more easily operated with a closed fist. • Lower lock to be within the reach range.
	Access to Good and Services	<ul style="list-style-type: none"> • Move conference room sign to the latch side of the door and mount, centered in the 18 inches of clear space to the left of the door. Make sure the base line of text has the lowest character above 48 inches and the baseline of the highest character is no more than 60 inches.
	Access to Public Toilet Rooms	<ul style="list-style-type: none"> • Install sign compliant with 703, centered in the 18 inches on the latch side (left) of the door. (https://www.access-board.gov/ada/#ada-703)

		<ul style="list-style-type: none"> • Lower the counter so that the sink is a maximum of 34 inches above the floor. Make sure to maintain 27 inches of knee clearance. • Install sign compliant with 703, centered in the 18 inches on the latch side (left) of the door. • Insulate pipes under sink. • Install toilet seat with larger legs to extend to 17 inches high. • Move grab bar forward so that it is positioned 12 inches from the rear wall and extends 54 inches forward from the rear wall. • Move toilet paper dispenser forward so that the center is 7-9 inches from the front of the toilet.
Additional Information/ Recommendations: Outdoor Developed Areas		<ul style="list-style-type: none"> • Create accessible routes to all outdoor elements, including stage and stage viewing area. • Create 36 inches of accessible clear space around picnic tables. • Make sure picnic tables have 30 x 48-inch wheelchair spaces. • Create 48 inches of accessible clear space around fire rings. • Install wheelchair spaces 36 x 48 next to benches.

Sandy Beach County Park		Accessibility Ranking: 2
Area	Recommendation	
Picnic Area At Beach	Accessible Route	Pave accessible route to picnic area, grills and trash cans from accessible parking.
	Grills	Add compliant clear ground space.
	Trash Cans	Add compliant clear ground space and attach to accessible routes.
	Beach Access Route	Add a beach access route
Play Area At Beach	Accessible Route	Add accessible routes to play area and add accessible play components.
	Ground Surface	Add compliant ground surface to provide access to play elements.
Parking At Beach	Parking	Add a van accessible space to the parking lot and connect to the accessible route. Ensure proper dimensions and signage.
	Parking Spaces	Add compliant van accessible parking space with proper markings, access aisles, and signage.
Portable Restrooms	Door Maneuvering Clearance	Move accessible portable toilet to be adjacent to the firm, stable, and slip resistant parking area. Make sure maneuvering clearance does not have slope greater than 2% in any direction.
	Blue Door Portable Restrooms	Make sure any accessible portable restrooms have the minimum required clear space. In general, with portable restrooms, the larger, the better and many companies advertise "ADA Compliant" portable restrooms that are not compliant.
Boat Launch	Parking signage	Add compliant van accessible parking signage with new Michigan "Go Logo"
	Parking Spaces	Add one more accessible parking space, make sure all are properly marked.
	Boat Launch Dock	Fix metal plate/gangways to allow access to the boat launch docks.
	Boat Dock With Boat Parking	Add an accessible route to the dock and provide an access ramp to dock level. Make sure it meets all ramp requirements.
	Parking And Access Aisle Slope	Regrade to make slope in all directions less than 2%.
Campground Play Area	Accessible Route	Add an accessible route to the play area and all elements. See ASTM F1951.
	Ground Surface	Wood fiber surfaces need to be properly installed, regularly maintained, and packed down to ensure accessibility. Poured in place rubber surfacing or rubber tiles work best.
	Transfer Area	Add compliant transfer area by improving surface accessibility.
	Basketball Court	Add accessible route to the court.
General	Accessible Route	Provide accessible route to benches, trash cans, grills and fire rings.
	Trash Cans	All trash cans should join an accessible route and have the required clear ground space.
	Benches	Provide accessible routes to benches and compliant wheelchair spaces.

Fern Cabin	Ramp	Add compliant handrails on both sides of the ramp.
	Top Ramp Landing	Rebuild to have 60-inch landing.
	Ramp Slope	Extend to have compliant slope.
	Parking	Add van accessible parking space with compliant access aisle.
	Fire Ring and Grill	Add compliant clear ground space.
	Accessible Route	Add accessible route to all elements.
	Picnic Table	Add accessible picnic table.
	Picnic Table	Add concrete to allow proper clearance around picnic table.
	Grill	Lower to be within the range.
Elm Cabin	Accessible Parking	Add extra concrete to make the space 11 ft wide.
	Parking Signage	Raise to have the bottom be 60 inches above the ground.
	Ramp	Add compliant handrails on both sides of the ramp
	Bottom Ramp Landing	Extend concrete another 19 inches to have compliant landing.
	Top Ramp Landing	Rebuild to have 60-inch landing.
	Grill And Fire Ring	Add compliant clear ground space.
	Picnic Table	Add accessible picnic table.
	Accessible Route	Add accessible route to all elements.
	Top Ramp Landing to Deck	Rebuild ramp landing to compliant length and then match to deck level.
	Transition From Bottom Ramp Landing	Rebuild ramp landing to compliant length and then match to deck level.
Dogwood Cabin	Accessible Parking	Add extra concrete to make the space 11 ft wide.
	Parking Signage	Raise to have the bottom be 60 inches above the ground.
	Ramp	Add compliant handrails on both sides of the ramp
	Bottom Ramp Landing	Extend concrete another 19 inches to have compliant landing.
	Top Ramp Landing	Rebuild to have 60-inch landing.
	Grill And Fire Ring	Add compliant clear ground space.
	Grill And Fire Ring	Add accessible route to all elements.
	Transition From Ramp To Deck	Rebuild ramp landing to compliant length and then match to deck level.
	Transition At Bottom Of Ramp	Rebuild ramp landing to compliant length and then match to deck level.
Cedar Cabin	Accessible Parking	Add extra concrete to make the space 11 ft wide.
	Ramp	Add compliant handrails on both sides of the ramp.
	Bottom Ramp Landing	Extend concrete another 19 inches to have compliant landing.
	Top Ramp Landing	Rebuild to have 60-inch landing.
	Grill And Fire Ring	Add compliant clear ground space.
	Accessible Route	Add accessible route to all elements.
	Transition At Bottom of Ramp	Rebuild ramp landing to compliant length/slope and then match to deck level.
	Picnic Table	Add accessible picnic table and move onto concrete.
	Picnic Table	Add compliant clear ground space.
Birch Cabin	Accessible Parking	Add extra concrete to make the space 11 ft wide or move access aisle.
	Ramp	Add compliant handrails on both sides of the ramp
	Bottom Ramp Landing	Extend concrete another 19 inches to have compliant landing.
	Top Ramp Landing	Rebuild to have 60-inch landing.
	Fire Ring and Grill	Add compliant clear ground space.
	Accessible Route	Add accessible route to all elements.
	Transition At Bottom Of Ramp	Rebuild ramp landing to compliant length and then match to deck level.
	Picnic Table	Add accessible picnic table and move onto concrete.

Aspen Cabin	Parking	Add van accessible parking space and signage.
	Route From Parking	Add accessible parking space and accessible route
	Bottom Ramp Landing	Pour concrete pad at least 60 inches in length and an accessible route from ramp to parking.
	Grill And Fire Ring	Add compliant clear ground space.
	Accessible Route	Add accessible route to all elements.
	Ramp Surface	Replace warped boards.
	Parking	Add van accessible parking space and signage.
Oak Cabin	Route From Parking	Add van accessible parking space and accessible route.
	Bottom Ramp Landing	Pour concrete pad and accessible route from ramp to parking.
	Fire Ring And Grill	Add compliant clear ground space.
	Accessible Route	Add accessible route to all elements.
Goldenrod Cabin	Accessible Parking	Add extra concrete to make the space 11 ft wide.
	Ramp	Add compliant handrails on both sides of the ramp
	Top Ramp Landing	Rebuild to have 60 inch landing.
	Fire Ring And Grill	Add compliant clear ground space.
	Transition At Bottom Of Ramp	Use more gradual transition to bottom of ramp
	Fire Ring, Grill, And Picnic Table	Add accessible route to all elements.
	Picnic Table	Connect accessible route from parking and add more concrete to have 36 inches around all edges of the table.
	Grill	Lower to be within the range.
Pine Cabin	Parking	Add van accessible parking space with proper signage.
	Accessible Route	Add accessible route to the ramp from accessible parking.
	Ramp Landing	Add accessible route and compliant ramp landing.
	Handrail	Add compliant handrail on both sides.
	Handrail	Install compliant handrail.
Maple Cabin	Parking	Add van accessible parking space.
	Accessible Route	Add accessible route to the ramp from accessible parking.
	Ramp Landing	Add accessible route and compliant ramp landing.
	Handrail	Add compliant handrail on both sides.
	Handrail	Install compliant handrail.
	Ramp Landing; Top	Extend top landing to pole to get 60 inches.
Beech Cabin	Parking	The parking space is in not nearly compliant.
	Accessible Route	Add accessible route to the ramp from accessible parking.
	Ramp Landing	Add accessible route and compliant ramp landing.
	Ramp Landing; Top	Extend top landing to pole to get 60 inches.
	Handrail	Add compliant handrail on both sides.
	Handrail	Install compliant handrail
Bathhouse 1; Large Camping Area	Parking	Add 1.5 feet of concrete to make it 24 ft wide and restripe to have 2, 8 ft wide parking spaces that share an 8 ft access aisle. Mark one space with van accessible signage.
	Parking Signage	Follow prior recommendation and add van accessible sign to one space.
	Ramp Slope	Ramp with handrail is too steep. Regrade to have compliant slope
	Handrails	Add handrails to make sure there are handrails on both sides of the ramp. Existing handrail is compliant.
	Shower Threshold	Add beveled transition to make easier roll in access. Or re-tile floor to bring up to 1/4-inch maximum threshold.
	Drinking Fountain	Lower so leading edge is 27 inches max above the floor.
	Rear Grab Bar; Women's	Move 2 inches to the left.
	Sign; Both	Signs are permitted on center of push side of doors with closers, but they need to be within reach range.

	Sink Pipe Insulation; Both	Insulate all sink pipes to prevent burns.
	Coat Hooks; Both	Lower to be within 48-inch reach range.
	Stall Door; Both	Add loop handle on inside of door.
	Soap Dispenser; Women's	Move to side wall and lower to be below 48 inches.
	Soap Dispenser; Men's	Move to side wall and lower to be below 48 inches.
	Faucet Control; Both	Install controls that require less than 5 lbs. of force. Motion sensor are the best for accessibility.
	Toilet Paper Dispenser; Both	Move to provide required clearance. There should be at least 12 inches between the Grab Bar and the dispenser, and it should not be more than 48 inches from the floor.
	Rear Grab Bar; Men's	Move 3 inches to the right.
	Stall Door; Both	Add door closers.
Bathhouse 2; Small	Parking	Add van accessible parking space and signage
	Accessible Route	Add accessible parking and accessible route to building.
	Men's Restroom	Add accessible route, ramp entrance, combine multiple stalls and add grab bars.
	Women's Restroom	Add accessible route, ramp entrance, combine multiple stalls, and add grab bars.
	Women's Shower	Add accessible route, ramp entrance, create accessible shower stall.
	Men's Shower	Add accessible route, ramp entrance, create accessible shower stall.
Office	Parking	Add van accessible parking space.
	Ramp Threshold	Bevel to provide better access.
	Handrail	Add a compliant handrail on both sides of the ramp. Should extend the whole ramp and 1 ft into bottom landing.
	Handrail	Add handrails with compliant cross section
	Ramp	Rebuild to have compliant slope. You may want to run along the long edge of the building.
	Ramp Landing; Top	Rebuild to have 60-inch top landing.
	Gap At Top of Ramp	Fill in or cover with flat surface.
	Door Handle	Add lever style.
	Door Threshold	Replace with compliant threshold
	Switches/controls	Move to at least 15 inches high

White Cloud County Park		Accessibility Ranking: 2
Area		Recommendation
Main Office	Parking	Install van accessible parking space
	Accessible Route	Install accessible parking space and connect to route
	Accessible Route	Make at least 36 inches wide for entire length.
	Threshold	Grind down or raise accessible Route to meet the floor level of the office.
Lodge	Parking	Pour accessible parking spaces that are required by 208. Estimate the total number needed for a typical event and pour the corresponding number of accessible spaces. 1/6 need to be van accessible.
	Accessible Route	Install accessible parking and an accessible route from accessible parking spaces.
	Ramp	Regrade ramp to have a maximum slope of 8.33% (1:12) at all points.
	Ramp	Install edge protection compliant with the figure and information provide.
	Ramp	Install a 60-inch landing at the bottom of the ramp that is the same width as the ramp. Connect to an accessible route.
	Handrail	Install handrail extensions.
	Handrail	Install new handrails compliant with the dimensions provided.
	Doorknob	Install lever style door handle.
	Counter In Big Room	Install edge detection that extends to 27 inches at the edge of the counter.

	Fire Extinguisher	Recess into wall or lower so that the bottom edge is within 27 inches of the ground.
	Kitchen Counter	Lower counter to be no more than 34 inches above the ground.
	Kitchen Sink	Lower whole counter and sinks to 34 inches maximum.
	Kitchen Sink	Reconfigure sink mechanics to provide knee and toe clearance.
	Kitchen Sink	Install controls that can be used with a closed fist.
	Oven/Cook Top	Get oven with all front controls
	Fire Ring	Pour accessible route to fire ring and provide required clear space.
Trecker Cabin	Parking Space	Install van accessible parking space with the required access aisle.
	Accessible Route	Install accessible parking with access aisle and accessible route from the access aisle to the ramp.
	Ramp	Install 60-inch landing at the bottom of the ramp that is at least the width of the ramp.
	Handrail	Add compliant handrail on cabin side of ramp.
	Handrail	Add compliant handrail on top of existing structure.
	Handrail	Install compliant handrail on top of the existing structure.
	Handrail	Install extension.
	Accessible Route	Install accessible route to all elements.
	Grill And Fire Ring	Install compliant clear ground space.
	Threshold	Install new threshold that meets the requirements.
	Bedrooms	Alter beds to be accessed from the ends.
	Outlet Over Counter	Move to the side of the counter.
	Counter	Lower counter or provide alternate work surface.
	Heat And Electrical Controls	Lower to be at or below 48 inches
	Bedroom Heat Controls	Raise to be above 15 inches.
	Coat Racks	Take down to 4 inches.
	Fire Alarm	Install alarm with visual notification system
Bathhouse	Parking	Install compliant van accessible parking space. Connect access aisle to accessible route around building.
	Sink	Install different sink
	Sink	Insulate pipes
	Flush Control	Install different tank
	Rear Grab Bar	Shift to be compliant
	Side Grab Bar	Move to comply
	Toilet	Move to be 16 to 18 inches from wall. This may help rear grab bar issue as well.
	Sign	Remove paper sign.
	Shower Threshold	Remove or install smaller one
	Sink	Install narrower sink or remove.
	Signs At Inaccessible Restrooms	Install directional signs at inaccessible bathrooms.
	Door	Add closer. Make sure it takes longer than 5 seconds to close.
Pavilion	Picnic Shelter	Pave route to pavilion
	Picnic Tables	Add accessible picnic tables
	Parking	Add a compliant van accessible space
	Grill	Pour a concrete pad around the grill.
	Grill	Pour a 36-inch-wide sidewalk to the grill
	Accessible Route	Install accessible route to all components

Pettibone County Park (day use)		Accessibility Ranking: 2
Description of Accessible Elements:	Pettibone County Park offers an accessible unisex portable toilet.	

Grant-Assisted Parks and Recreation Facilities

Newaygo County has completed five recreation grants from the Michigan Department of Natural Resources (MDNR). Post-Completion Self-Certification Reports for each of these projects have been completed by Newaygo County and submitted to the MDNR along with this recreation plan.

Title: Edgar E. Henning Park Year: 1970 Grant Amount: \$93,500.00

Project Description: Develop about 82 acres include roads, parking, boat launching ramp, and 60 site camping area on the north Muskegon River in the City of Newaygo, Newaygo County.

Title: Ed Henning County Park Year: 1973 Grant Amount: \$67,536.03

Project Description: Develop 20 acres to include 2 ball fields, parking, 2 tennis courts, swimming pond, bathhouse, sanitary system and fencing.

Title: Sandy Beach Project Year: 1985 Grant Amount: \$80,000.00

Project Description: To acquire 80 acres of land adjacent to Sandy Beach County Park which abuts the Hardy Dam Reservoir.

Title: Camp Swampy Acquisition Year: 2006 Grant Amount: \$962,000.00
Diamond Lake County Park

Project Description: Acquisition of 151-acre Steelcase Camp including white oak-pine barrens, forests, dry sand prairie, and an 11-acre wetland bog with 2,000 feet on Diamond Lake adjacent to existing protected areas for habitat protection, camping, hunting, fishing and swimming.

Title: Sandy Beach County Park Year: 2008 Grant Amount: \$267,500.00
Improvement

Project Description: Improvements to Sandy Beach Park on Hardy Pond included paved entrance and interior road, upgrade of 22 campsites to full hook-ups, two camping cabins, courtesy ramp at boat launch, and day-use picnic shelter with walkway.

Title: Michigan's Dragon Trail at Year: 2019 Grant Amount: \$180,000.00
Hardy Dam (ongoing)

Development of "The Dragon", a multi-use, single-track, non-motorized trail. The trail is intended for foot and bicycle traffic. It is not intended for equestrian use due to safety and erosion concerns. The planned route is 42 miles in length and will have 6 trailheads with parking at existing recreation sites. These existing recreation facilities consist of campgrounds and day-use facilities. The trail will have a natural surface and will be 2 feet wide at completion (4 feet wide during construction). There are 13 designated trail overlooks. The trail is almost entirely on Consumers Energy property within the Hardy Dam Project Boundary. There are some locations where the trail will follow county roads due to terrain limitations and proximity to private property. Newaygo County will be responsible for the construction and maintenance of The Dragon.

DESCRIPTION OF THE PLANNING AND PUBLIC INPUT PROCESS

In 2022, Newaygo County approached the West Michigan Shoreline Regional Development Commission (WMSRDC) for assistance in the update of the Newaygo County Recreation Plan. Regional Commission staff attended a regularly scheduled Newaygo County Parks and Recreation Commission meeting held on July 12, 2022. During the meeting, WMSRDC staff informed the commission of the steps involved in the process of updating the plan. A timeline outlining the planning process was also presented at the meeting.

A contract between Newaygo County and the WMSRDC was signed in August 2022 with work on the Plan update beginning immediately. Newaygo County parks director, with the help of WMSRDC staff created an online public survey consisting of 16 questions designed to give the Parks Commission feedback regarding public likes and dislikes about the parks. The survey was distributed via email to parks customers and Newaygo County municipalities, flyer postings at county parks, social media postings, a letter to Newaygo County local units of government, and an article in the WMSRDC newsletter. The survey was available September 1 through September 30, 2022, and solicited a successful 155 responses. See page 42 for the Online Survey Summary Report.

At its regular meeting on October 4, 2022, the Newaygo County Parks Commission hosted a public input opportunity. All means to distribute the online survey included mention of this meeting and invited the public to attend. WMSRDC staff presented the survey results and engaged in an open dialogue with Commission members. The following week, the Parks Commission held a special meeting, which was also open to the public, to review and update the recreation plan goals and objectives. The final opportunity for public input was offered at the Parks Commission meeting on December 6, 2022. A noticed public hearing was held during this meeting to receive public comments regarding the proposed draft of this plan following the 30-day review period and prior to adoption by the Parks Commission.

The Newaygo County Board of Commissioners adopted this plan at its December 14, 2022, meeting.

GOALS AND OBJECTIVES

The following goals and objectives were formulated using feedback from county residents and park visitors, as well as input provided by the Newaygo County Parks Commission and the Parks Director. The goals and objectives are intentionally general and listed in no particular order.

Goal #1: Maintain and enhance the existing Newaygo County Park facilities.

- Maintain a capital improvement plan for county parks, including periodic review of progress and prioritization of identified tasks.
- Upgrade park facilities, including their accessibility, as money and opportunities arise.
- Maintain knowledgeable and friendly park staff, as well as a good relationship with campers and users of the park facilities.
- Maintain and improve recreational access to surface water.
- Provide level camping sites with proper drainage.
- Maintain a point-of-sale system for providing camping essentials at campground parks.
- Modernize playground equipment at the county parks as needed.
- Expand and improve day-use facilities.
- Add camping/family games and activities at park facilities.
- Identify opportunities for strategic expansion of camping season of the Newaygo County Parks and year-round recreation opportunities.
- Modernize campground infrastructure and technology to meet user demand.

Goal #2: Maintain the natural resources and rural character of Newaygo County through recreational uses.

- Develop, enhance, and maintain non-motorized trails for paddling, biking and walking throughout Newaygo County.

- Maintain a working relationship with the Newaygo County community and recreational organizations to provide recreation opportunities to area residents and visitors.
- Collaborate with local agencies and groups to:
 - Connect trail systems to enhance the regional trail network,
 - Expand and move to designate sections of existing rivers as blue water trails, and
 - Support volunteer conservation efforts.
- Explore opportunities to expand existing parks and/or develop additional parks in the county.
- Develop a conservation and natural resource management plan for each county park.

Goal #3: Increase public recreational opportunities within Newaygo County for residents and visitors of all ages.

- Coordinate efforts with local, state, and federal governments and private entities that provide recreational opportunities within the county.
- Maintain and enhance Michigan’s Dragon Trail at Hardy Dam.
- Support the efforts of the neighboring communities, the Newaygo County Tourism Council, and similar organizations, to promote tourism for a stronger economy.
- Continually promote and market the Newaygo County Park facilities to area residents and visitors.
- Explore the possibility of adding county-wide recreational programming.
- When appropriate, acquire and develop additional properties for recreation through purchase or donation.

ACTION PROGRAM

Newaygo County is committed to providing recreational opportunities to all residents and visitors alike; capitalizing on the abundant natural resources while sustaining them and maintaining the community's rural character. The Newaygo County Parks and Recreation Plan will be used by the Newaygo County Parks Commission and its director to pursue the goals and objectives set forth through this planning process, and to react appropriately as unforeseen needs arise. Public input gathered for this plan will remain a valuable tool to guide and prioritize maintenance and investment projects over the next five years.

Over the past five years, the Parks and Recreation Commission has made several park improvements through its existing budget and grant assistance. Work to improve the parks will continue into the foreseeable future. In addition, the Commission has achieved a self-sustaining revenue stream through user fees. All surplus revenue is to be reinvested into parks or used as local match for grants to support park improvements. Through the recreation plan planning process, the Commission and Parks Director have reaffirmed a commitment to continuous improvement of Newaygo County parks through a self-sustaining budget.

An overarching priority of the Newaygo County Parks and Recreation Commission is to grow tourism of the county and sustain its rural character through the provision of recreational opportunities. The county offers abundant natural resources including its lakes, rivers, streams, groundwater, woodlands, and unique wildlife habitats. Residents and visitors cherish these resources and consider it an utmost priority to preserve and protect these attractive features. Tourism is an important economic sector within Newaygo County. By taking efforts to preserve and protect the rural character and natural resources of the county, the tourism industry will continue to thrive and grow. Promotion of the county is another vital part to growing tourism. The Commission will continue to partner with and support other recreational providers and organizations, as well as continue to offer informative website and promotional materials.

Priorities of the Newaygo County Parks and Recreation Commission over the next five years include the following:

- Advance Newaygo County's status as a destination for non-motorized and motorized trails, including: completion of Michigan's Dragon Trail at Hardy Dam, and cooperation with local organizations and groups to designate and market sections of local rivers as blue water trails.
- Develop a strategy for the pursuit of grants to help fund implementation of the Parks and Recreation Capital Improvement Plan.
- Improve WIFI at county parks.
- Pursue sustainable park improvements, maintenance practices, and park operations.

CONCLUSION

If used appropriately, the Newaygo County Parks and Recreation Plan will assist Newaygo County in properly managing future recreation development. The plan is a guide for decision making, founded upon input from county residents and park visitors, and should be consulted regularly. Public input is an essential facet of this process and should be utilized when recreation facility decisions need to be made.

The plan should be updated as the local situation warrants, or every five years as required by the Michigan Department of Natural Resources to allow the county to remain eligible for grant consideration.



Online Survey Summary Report

Please note: Written responses are withheld due to the inappropriate nature of some comments.

1. What is your home zip code?

Zip code/Number of people from zip code

40349 /1	48837 /1	49067 /1	49321 /2	49349 /14	49442 /4	49525 /3
48307 /2	48838 /1	49085 /1	49323 /1	49412 /13	49443 /1	49534 /1
48609 /1	48842 /1	49107 /1	49327 /4	49417 /1	49444 /3	49544 /2
48640 /1	48877 /1	49265 /1	49329 /3	49418 /1	49456 /1	60487 /1
48662 /2	48881 /1	49304 /1	49331 /2	49421 /3	49461 /1	
48820 /1	48917 /1	49306 /3	49337/25	49424/2	49501 /1	
48821 /1	49009 /1	49307 /1	49341/1	49425 /1	49505 /1	
48827 /2	49055 /1	49309 /1	49345/3	49426 /2	49507 /1	
48829/1	49057 /1	49312 /2	49346/1	49428 /5	49508 /2	

2. Are you a Newaygo County resident or land owner?

	Responses	Percent
Yes:	71	46.1%
No:	83	53.9%

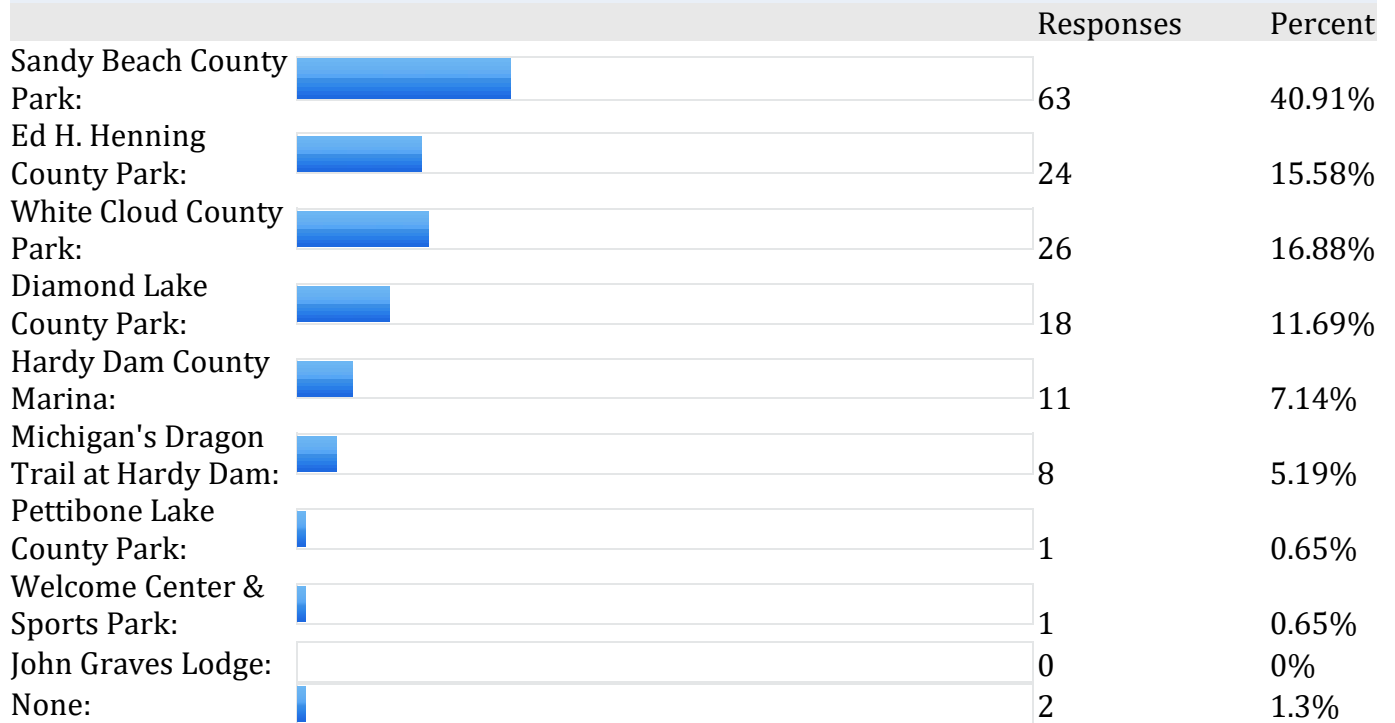
3. How many camping/boating seasons have you been a paying customer of Newaygo County Parks and Recreation?

	Responses	Percent
1 season:	21	13.55%
2-5 seasons:	46	29.68%
6-9 seasons:	29	18.71%
10+ seasons:	54	34.84%
None:	5	3.23%

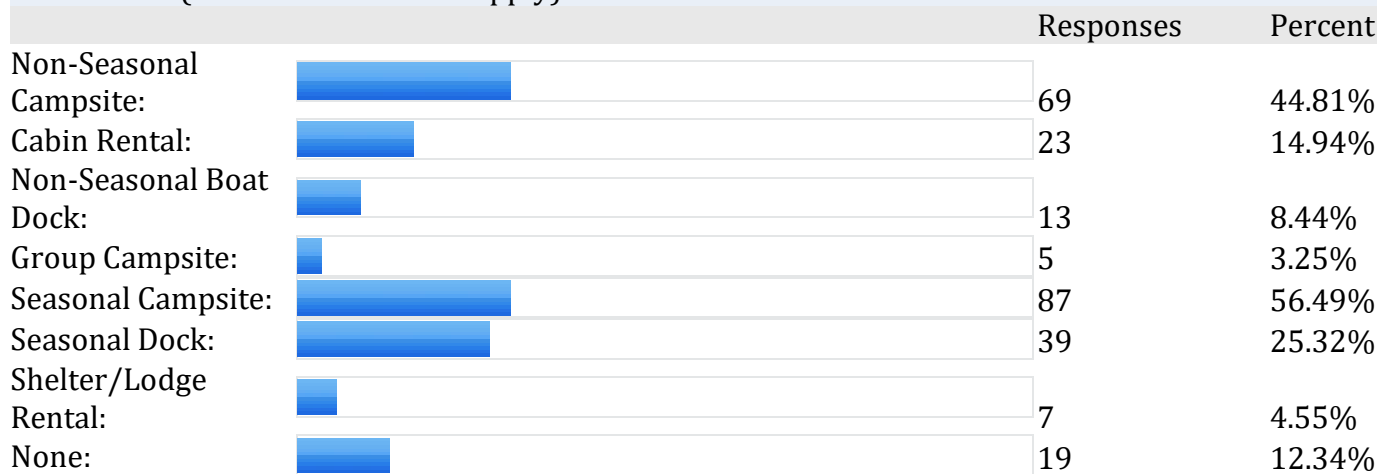
4. Why do you visit Newaygo County Parks?

	Responses	Percent
Long response		

5.
What Newaygo County Park do you visit the most?



6.
Which of the following facility reservations have you made with Newaygo County Parks and Recreation? (Please select all that apply)



7. How likely are you to reserve any of the facilities again?

	Responses	Percent
Very likely:	97	64.24%
Likely:	37	24.5%
Unlikely:	12	7.95%
Very unlikely:	5	3.31%
Additional Comments:	37	24.5%

8. Rate your satisfaction with the appearance and feel of Newaygo County Parks:

	Responses	Percent
Extremely satisfied:	51	33.33%
Satisfied:	83	54.25%
Dissatisfied:	18	11.76%
Extremely dissatisfied:	1	0.65%
Additional Comments:	29	18.95%

9. Please rate your satisfaction with park buildings and infrastructure:

	Responses	Percent
Extremely satisfied:	29	19.21%
Satisfied:	84	55.63%
Dissatisfied:	33	21.85%
Extremely dissatisfied:	5	3.31%
Additional Comments:	57	37.75%

10. Please rate your overall satisfaction with Newaygo County Parks and Recreation:

	Responses	Percent
Extremely satisfied:	44	29.73%
Satisfied:	89	60.14%
Dissatisfied:	15	10.14%
Extremely dissatisfied:	0	0%
Additional Comments:	24	16.22%

11.

We've made many improvements over the past couple of years. What improvements have you enjoyed the most?

	Responses	Percent
Long response		

12.

Help us decide where to make future improvements at the park you visit the most! Please select up to three of your most-preferred park projects.

	Responses	Percent
Install new playground equipment:	38	25.17%
Improve restrooms buildings:	65	43.05%
Add/improve WIFI:	66	43.71%
Improve beach/day use area:	30	19.87%
Install new docks:	29	19.21%
Add septic hookups to campsites:	44	29.14%
Offer more organized activities/events:	20	13.25%
Add water to campsite/boat slips:	24	15.89%
Improve campsite/boat slip electrical:	17	11.26%
Improve existing docks:	25	16.56%
Improve roadways in parks:	8	5.3%
Improve the boat launch:	15	9.93%
If other, please specify:	20	13%

13.

What one is the most important parks improvement to you and why?

	Responses	Percent
Long response		

14. What types of events or activities would you like to see in Newaygo County Parks?

	Responses	Percent
Long response		

15. How likely are you to recommend Newaygo County Parks to someone you know?

	Responses	Percent
Very likely:	82	54.3%
Likely:	62	41.06%
Unlikely:	7	4.64%
Very unlikely:	0	0%

16. Is there anything we missed? Feel free to share additional comments!

	Responses	Percent
--	-----------	---------

Plan Adoption Documentation



RESOLUTION 2022-01 RESOLUTION FOR RECOMMENDING ADOPTION OF A RECREATION PLAN

*NEWAYGO COUNTY RECREATION PLAN
For Newaygo County, MI*

At the regular meeting of the Newaygo County Parks and Recreation Commission held on the date of December 6, 2022.

WHEREAS, the Newaygo County Parks and Recreation Commission has undertaken a planning process to determine the recreation and natural resource conservation needs and desires of its residents during a five-year period covering the years 2023 through 2027, and

WHEREAS, Newaygo County Parks and Recreation Commission began the process of developing a community recreation plan in accordance with the most recent guidelines developed by the Department of Natural Resources and made available to local communities, and

WHEREAS, residents of Newaygo County were provided with a well-advertised opportunity during the development of the draft plan to express opinions, ask questions, and discuss all aspects of the recreation plan, and

WHEREAS, the public was given a well-advertised opportunity and reasonable accommodations to review the final draft plan for a period of at least 30 days, and

WHEREAS, a public hearing was held on Tuesday, October 2, 2022, and on Tuesday, December 6, 2022 at the Newaygo County Welcome Center to provide an opportunity for all residents of the planning area to express opinions, ask questions, and discuss all aspects of the proposed Newaygo County Recreation Plan, and

WHEREAS, the Newaygo County Parks and Recreation Commission has developed the plan as a guideline for improving recreation and enhancing natural resource conservation for Newaygo County.

NOW, THEREFORE BE IT RESOLVED that the Newaygo County Parks and Recreation Commission pass a resolution to recommend the adoption of the proposed Newaygo County Recreation Plan for the period of 2023-2027 by the Newaygo County Board of Commissioners.

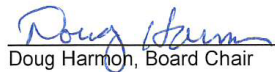
The Newaygo County Parks and Recreation Commission resolution was offered by **Stroven** and Seconded By **Hatting**

Yes: **Chandler, Clark, Guzniczak, Harmon, Hatting, Maike, Stroven, Trapp, Twing**

Nays: None

Absent: Pitzer

The above resolution was declared adopted by Newaygo County Park and Recreation Commission at the regularly scheduled meeting on December 6, 2022.


Doug Harmon, Board Chair

12-6-2022
Date



STATE OF MICHIGAN
COUNTY OF NEWAYGO
BOARD OF COMMISSIONERS

At a regular session of the said Board held in the City of White Cloud, in said County,
on the 14th day of December 2022, the following Resolution was adopted:

RESOLUTION #12-027-22
2023-2027 NEWAYGO COUNTY RECREATION PLAN

WHEREAS, the Newaygo County Board of Commissioners supports the submission of an application titled,
and,

WHEREAS, Newaygo County has undertaken a planning process to determine the recreation and natural
resource conservation needs and desires of its residents during a five-year period covering the years 2023
through 2027, and

WHEREAS, Newaygo County began the process of developing a community recreation plan in accordance
with the most recent guidelines developed by the Department of Natural Resources and made available to
local communities, and

WHEREAS, residents of Newaygo County were provided with a well-advertised opportunity during the
development of the draft plan to express opinions, ask questions, and discuss all aspects of the recreation
plan, and

WHEREAS, the public was given a well-advertised opportunity and reasonable accommodations to review
the final draft plan for a period of at least 30 days, and

WHEREAS, a public hearing was held on Tuesday, December 6, 2022, at the Newaygo County Welcome
Center to provide an opportunity for all residents of the planning area to express opinions, ask questions,
and discuss all aspects of the proposed Newaygo County Recreation Plan, and

WHEREAS, Newaygo County has developed the plan as a guideline for improving recreation and enhancing
natural resource conservation for Newaygo County, and

WHEREAS, after the public hearing, the Newaygo County Board of Commissioners voted to adopt said
Newaygo County Recreation Plan.

NOW, THEREFORE BE IT RESOLVED, the Newaygo County Board of Commissioners hereby adopts the
Newaygo County Recreation Plan.

Motion by: DeLaat Supported by: Trapp to adopt the foregoing Resolution.

The Ayes being: Bird, DeLaat, Kolk, Kruithoff, Maik, Mellema, Trapp

Nays: None Absent: None

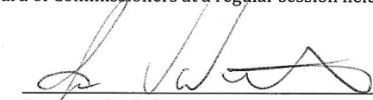
The Resolution was adopted
December 14, 2022.



Bryan Kolk
Newaygo County Board of Commissioners

STATE OF MICHIGAN)
)ss
COUNTY OF NEWAYGO)

I, Jason VanderStelt, County Clerk, do hereby certify that the foregoing is a true copy of Resolution #12-
027-22 adopted by the Newaygo County Board of Commissioners at a regular session held on the 14th day
of December 2022.



Jason VanderStelt
Newaygo County Clerk